

## TEST REPORT

Code: NC02310/1

Test date: 18 . 05 . 2012

Test method

### **British Standard 5852**

Methods of test for Assessment of the ignitability of upholstered seating by smouldering and flaming ignition sources  
Source 2

#### THE REQUIRING FIRM

**MARIO SIRTORI SpA**

Via Papa Giovanni XXIII, 10

I - 23845 COSTAMASNAGA (Lecco)

#### DENOMINATION AND DESCRIPTION OF THE MATERIAL :

##### **L A M A**

Cover: Composition: 65% WO - 15% WP - 20% PA; weight: 430 g/m<sup>2</sup>.

Upholstery: Foam: PUR standard

The water soaking procedure was carried out on the cover. Conditioned samples. Small test rig.

#### TEST RESULTS: Source 0: no ignition

Cigarette	Test 1	Test 2	Comments
Smouldering criteria			
Unsafe escalating combustion	yes	yes	
Smoulders through thickness	yes	yes	
Smoulders >50 mm from source	yes	yes	
Smoulders more than 1 hour	yes	yes	
In final examination >50 mm from source	yes	yes	
Flaming criteria			
Unsafe escalating combustion	yes	yes	
Test assembly consumed	yes	yes	
Flames to extremities	yes	yes	
Flames through thickness	yes	yes	
Occurrence of flames	yes	yes	
Debris causes an isolated floor fire	yes	yes	

\* Enter 'YES' if criteria exceeded or 'NO' if criteria not exceeded

*As a consequence of the above results, the examined material is to consider***positive***The global result is:***clause 11: NI/0**

The following test results relate only to the ignitability of the combination of upholstery composites (BS 5852 : 2006, Clause 11) under the particular conditions of test stated; they are not intended as a means of assessing the full potential fire hazard of the materials or products in use

OLTRONA di S. MAMETTE, 18-05-2012

LABORATORY DIRECTOR

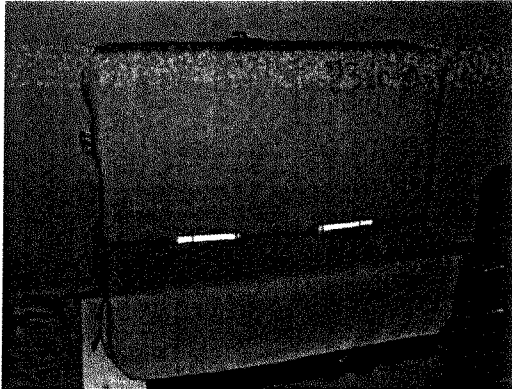
  
Maddalena Pezzani

TEST OPERATOR

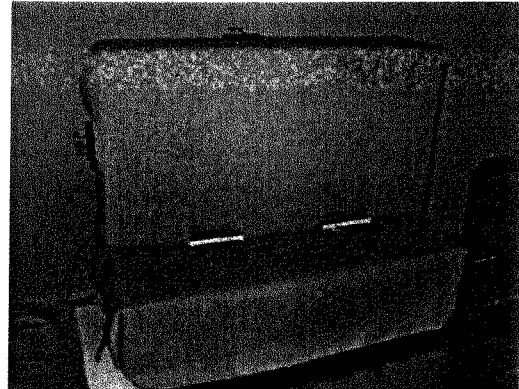
  
Silvana Carnevale

Photos

**Ignition source 0: cigarette**



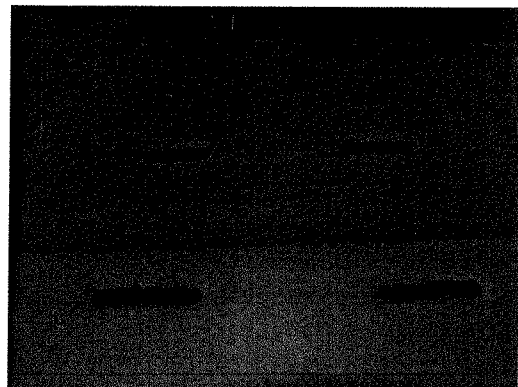
**Photo 1 – the ignition of cigarettes**



**Photo 2 – the burning out of cigarettes**



**Photo 3 – the specimen at the end of test**



**Photo 4 – the foam at the end of test**

## TEST REPORT

Code: NC02310/2

Test date: 18 . 05 . 2012

Test method

### **British Standard 5852**

Methods of test for Assessment of the ignitability of upholstered seating by smouldering and flaming ignition sources  
Source 2

#### THE REQUIRING FIRM

**MARIO SIRTORI SpA**

Via Papa Giovanni XXIII, 10

I - 23845 COSTAMASNAGA (Lecco)

#### DENOMINATION AND DESCRIPTION OF THE MATERIAL :

**L A M A**

Cover: Composition: 65% WO - 15% WP - 20% PA; weight: 430 g/m<sup>2</sup>.

Upholstery: Foam: PUR standard

The water soaking procedure was carried out on the cover. Conditioned samples. Small test rig.

#### TEST RESULTS: Source 2: no ignition

Match	Test 1	Test 2	Comments
Smouldering criteria			
Unsafe escalating combustion	yes	yes	
Test assembly consumed	yes	yes	
Smoulders to extremities	yes	yes	
Smoulders through thickness	yes	yes	
Smoulders more than 15 min	yes	yes	
In final examination >100 mm from source	yes	yes	
Flaming criteria			
Unsafe escalating combustion	yes	yes	
Test assembly consumed	yes	yes	
Flames to extremities	yes	yes	
Flames through thickness	yes	yes	
Flames longer than 120 s	yes	yes	
Debris causes an isolated floor fire	yes	yes	
* Enter 'YES' if criteria exceeded or 'NO' if criteria not exceeded			

*As a consequence of the above results, the examined material is to consider*

**positive**

*The global result is:*

**clause 11: NI/1**

The following test results relate only to the ignitability of the combination of upholstery composites (BS 5852 : 2006, Clause 11) under the particular conditions of test stated; they are not intended as a means of assessing the full potential fire hazard of the materials or products in use

OLTRONA di S. MAMETTE, 18-05-2012

LABORATORY DIRECTOR

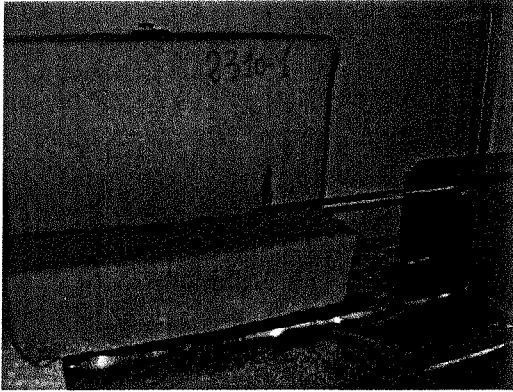
Maddalena Pezzani

TEST OPERATOR

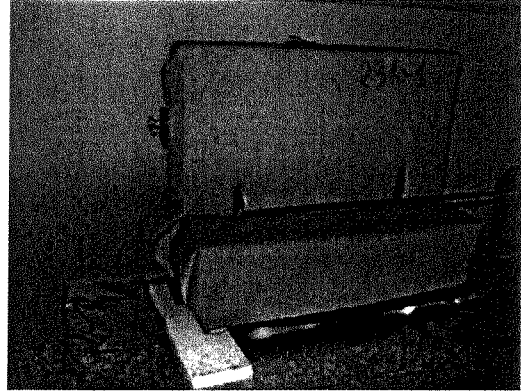
Silvana Carnevale

Photos

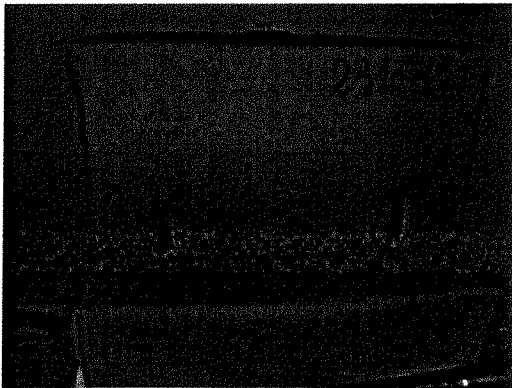
**Ignition source 1: Match**



**Photo 1 – the first ignition**



**Photo 2 – the second ignition**



**Photo 3 – the cover at the end of test**



**Photo 4 – the specimen at the end of test**