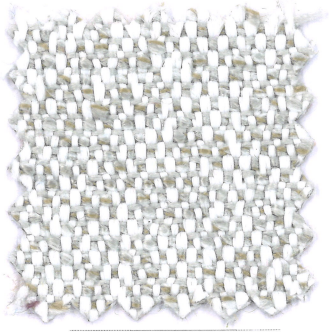


ALTAI

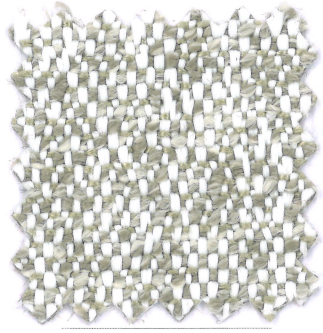
OUTPERFORM

ONE firma

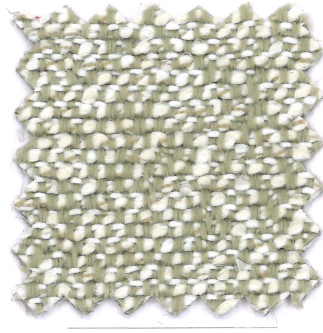
mariosirtoni



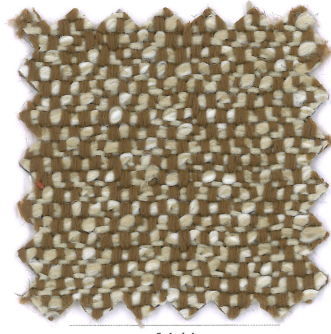
02/2



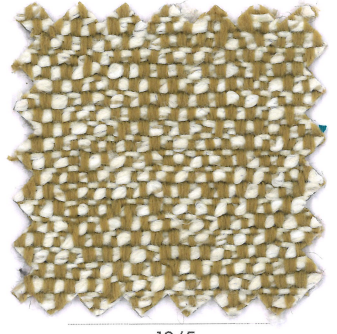
02/3



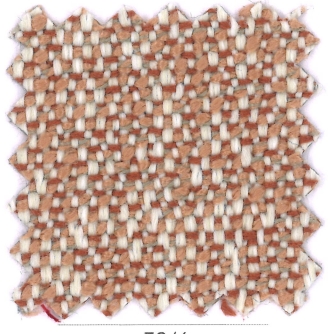
31/1



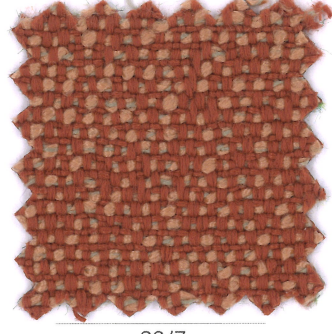
16/4



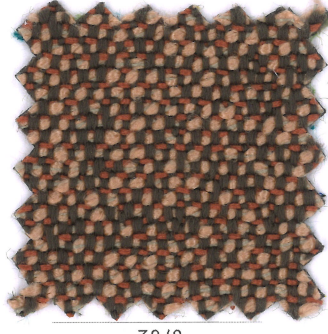
12/5



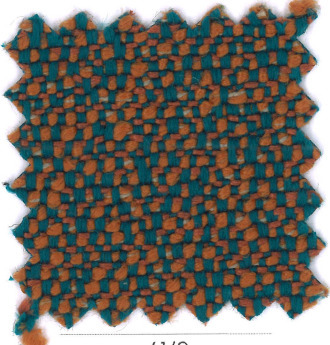
30/6



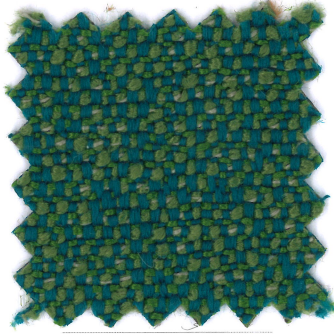
09/7



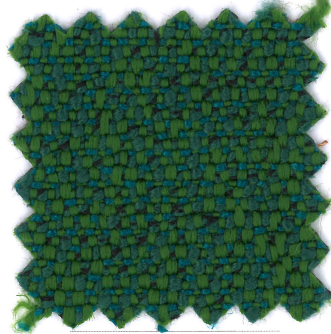
38/8



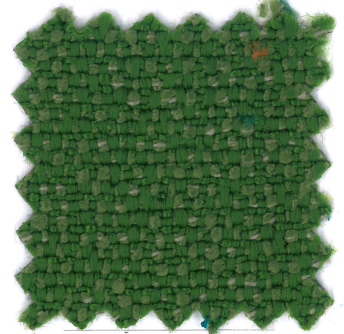
41/9



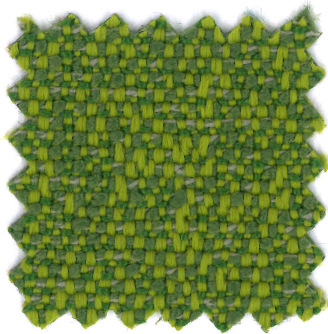
41/10



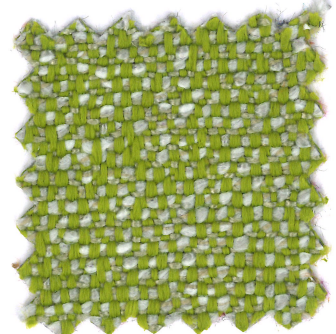
40/11



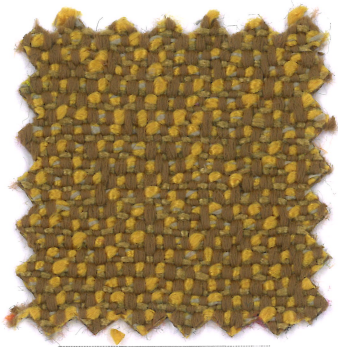
40/12



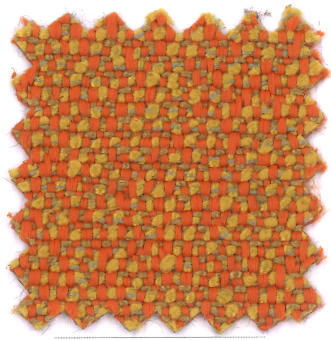
15/13



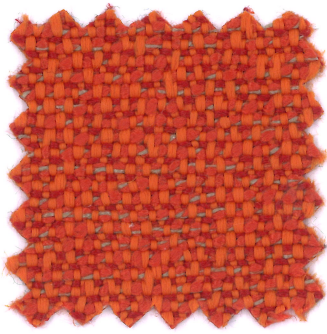
15/14



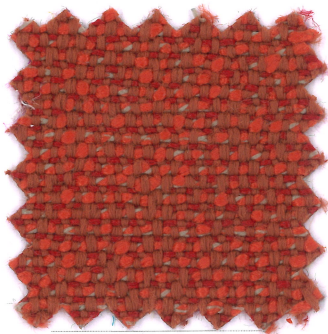
12/15



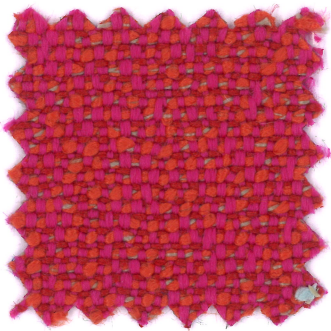
19/16



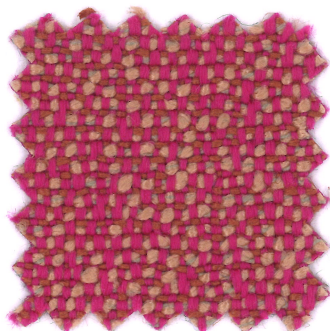
19/17



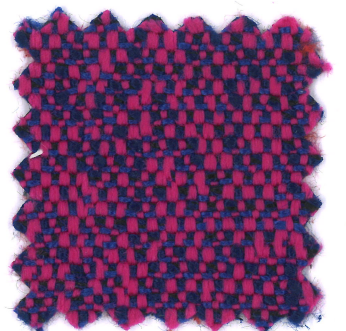
09/18



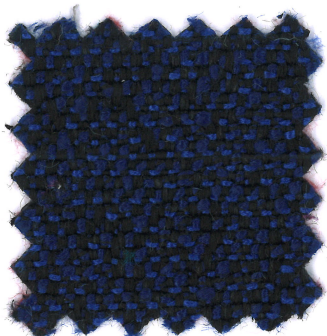
42/19



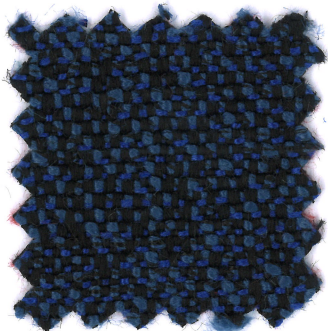
42/20



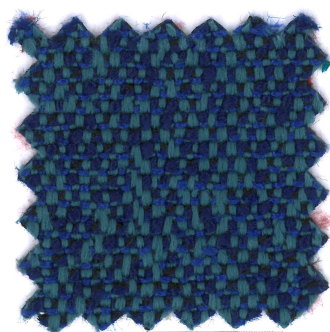
42/21



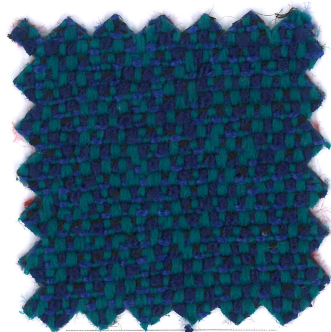
01/22



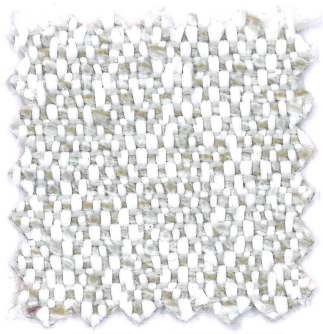
01/23



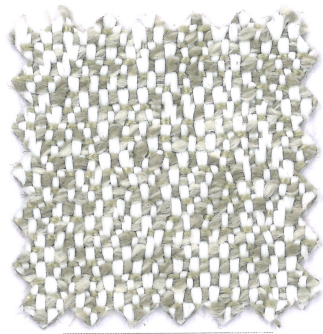
21/24



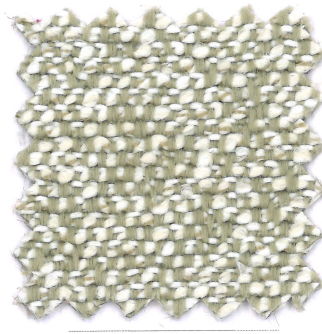
41/25



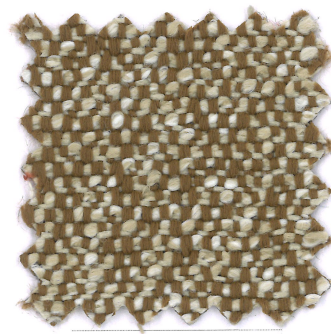
02/2



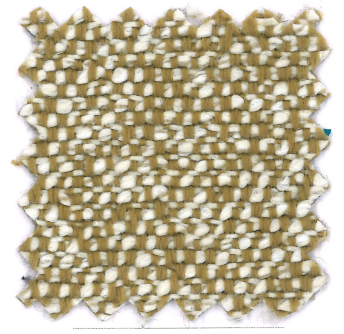
02/3



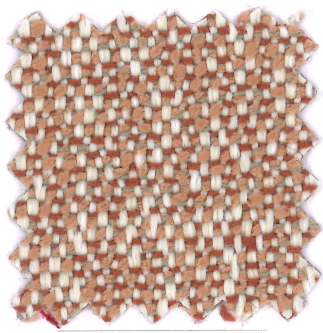
31/1



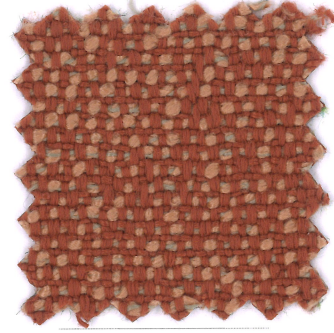
16/4



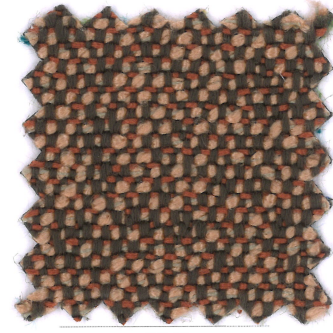
12/5



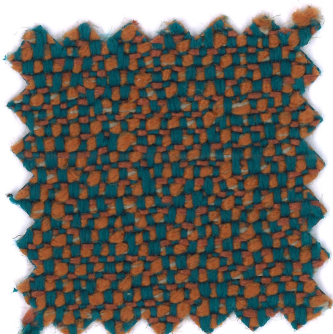
30/6



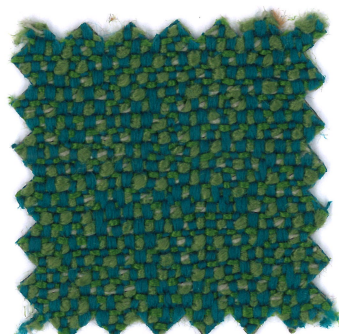
09/7



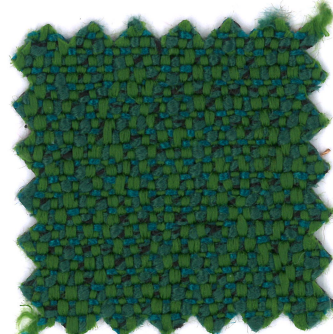
38/8



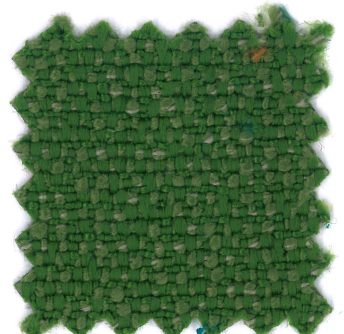
41/9



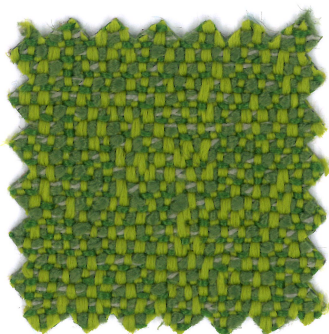
41/10



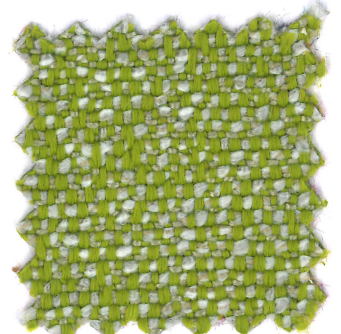
40/11



40/12



15/13



15/14

ALTAI



Composizione

100%PP

Altezza

Ca. 140 cm

Peso

520 g/m² 728 g/mtl
(+/-5%)

Resistenza all'abrasione

62.000 cicli Martindale
(EN ISO 12947-2)

Pilling

4/5 (EN ISO 12945-2)

Ignifugazione

California TB 117:2013
Cigarette BS5852.1.1979

Solidità alla luce

7 (EN ISO 105-B02)

Solidità allo sfregamento

Umido 4/5; Secco 4/5
(EN ISO 105-X12)

Lavaggio

Lavaggio a umido
Seguire simboli ISO

Designer

Carlo Colombo

Composition

100%PP

Width

App. 140 cm

Weight

520 g/m² 728 g/mtl
(+/-5%)

Abrasion resistance

62.000 Martindale cycles
(EN ISO 12947-2)

Pilling

4/5 (EN ISO 12945-2)

Flammability

California TB 117:2013
Cigarette BS5852.1.1979

Light fastness

7 (EN ISO 105-B02)

Fastness to rubbing

Wet 4/5; Dry 4/5
(EN ISO 105-X12)

Cleaning

Wet cleaning
Please see the ISO symbols

Designer

Carlo Colombo

Composition

100%PP

Largeur

Env. 140 cm

Poids

520 g/m² 728 g/mtl
(+/-5%)

Résistance à l'abrasion

62.000 Martindale tours
(EN ISO 12947-2)

Boulochage

4/5 (EN ISO 12945-2)

Flammabilité

California TB 117:2013
Cigarette BS5852.1.1979

Solidité à la lumière

7 (EN ISO 105-B02)

Solidité au frottement

Mouillé 4/5; Sec 4/5
(EN ISO 105-X12)

Nettoyage

Lavage à l'eau
Se référer aux symboles
ISO

Designer

Carlo Colombo

Zusammensetzung

100%PP

Breite

Ca. 140 cm

Gewicht

520 g/m² 728 g/mtl
(+/-5%)

Scheuerfestigkeit

62.000 Martindale
Scheuertouren
(EN ISO 12947-2)

Pilling

4/5 (EN ISO 12945-2)

Feuersicherung

California TB 117:2013
Cigarette BS5852.1.1979

Lichtechtheit

7 (EN ISO 105-B02)

Reibechtheit

Nass 4/5; Trocken 4/5
(EN ISO 105-X12)

Reinigung

Nassreinigung
Gemäß ISO Symbolen

Designer

Carlo Colombo

Geman Textile G.&G. Srl

sede legale: corso XXV aprile 167/B
22036 Erba - CO
magazzino: fraz. Ceresa 1
23895 Nibionno LC
onemariosirtori.com

- 100% recyclable fabrics
- Outperform series in solution dyed polypropylene
- Martindale and pilling suitable for upholstery
- Anti-allergic
- Resistant to fungus, bacteria, sunlight, humidity, chlorine, food stains and sweat
- Compatible with delicate baby skin.

- Eco-friendly (low energy for cleaning, long lasting life cycle, easy to use)
- Thermoregulating and traspiring.
- Resist years of washing, no odour absorption, washing only at 30° cycle and with small detergent.
- Quick drying, very comfortable and lightweight, easy to clean
- Bleach cleanable by using a very small quantity of bleach mixed up with water; it is very important that the bleach is properly removed with water and that the fabric is carefully dried up before sun light exposure