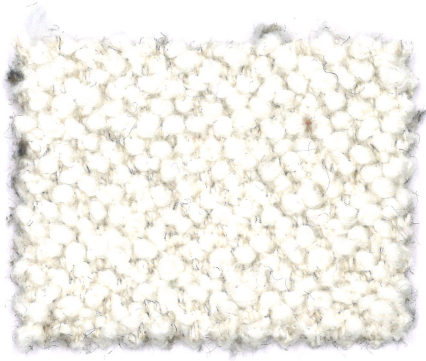


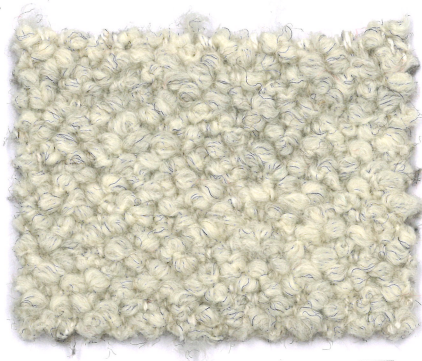
ORSETTO

ONE

mariosirtori



01/1



01/2



05/10



05/121



07/11



98/6



02/22



09/12



98/21



98/36



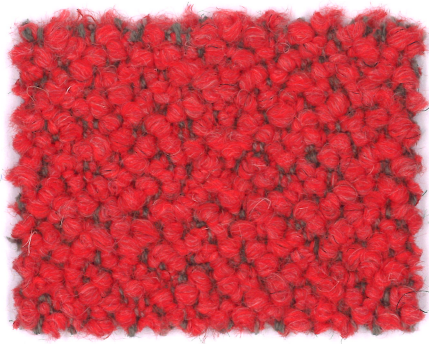
05/6



07/24



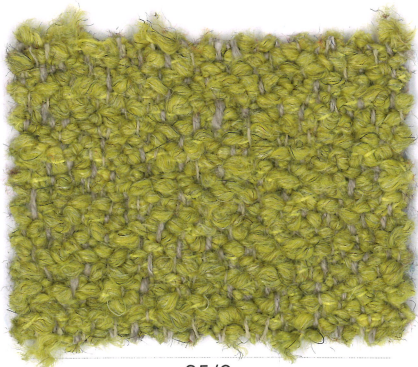
05/122



07/108



09/64



05/9



39/126



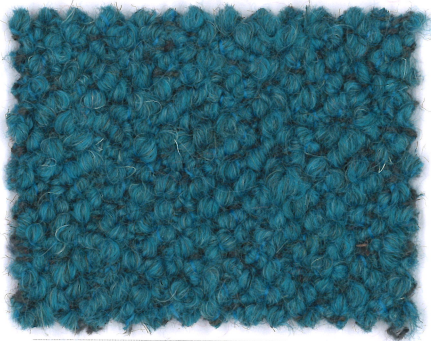
09/107



02/26



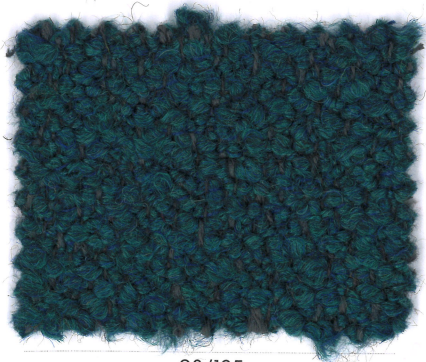
98/18



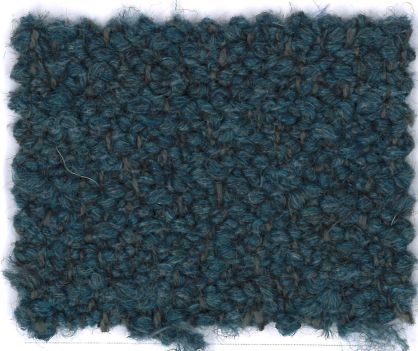
98/126



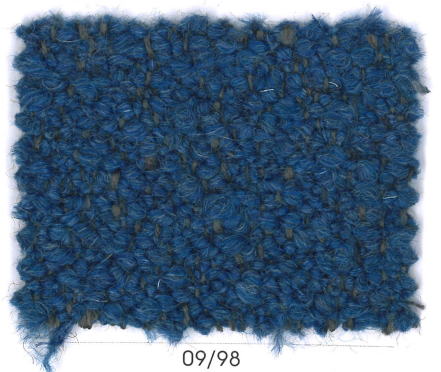
98/53



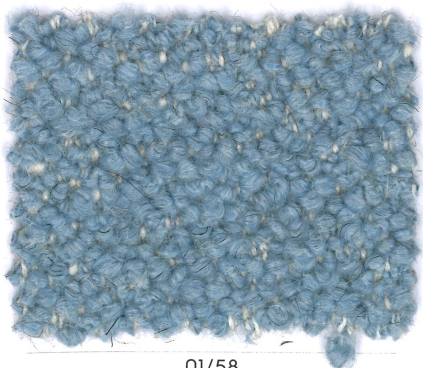
98/125



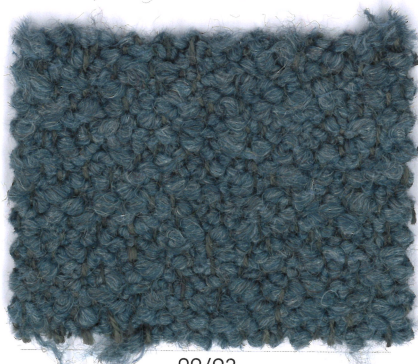
09/23



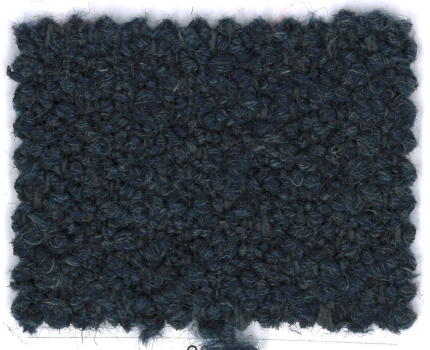
09/98



01/58

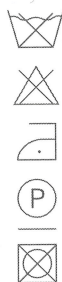


09/92



98

ORSETTO



Composizione
34%VI 33%PC 17%WO
8%PL 4%LI 4%CO

Altezza
Ca. 140 cm

Peso
940 g/m² 1316 g/ml
(+/-5%)

Resistenza all'abrasione
80.000 cicli Martindale
(EN ISO 12947 -2)

Pilling
5 (EN ISO 12945-2)

Ignifugazione
California TB 117:2013
C&M EN 1021.1&2
BS 5852 - CRIB 5
(resinato)
C&M BS 5852.0.1
NFPA 260:2019

Solidità alla luce
5 (EN ISO 105-B02)

Solidità allo sfregamento
Umido 4; Secco 5
(EN ISO 105-X12)

Lavaggio
Lavaggio a secco
Seguire simboli ISO

Note
Tessuto ipermoderno
composto da molteplici
filati che ricreano un
effetto di eleganza
raffinata e minimal.
L'originale ed inimitabile.

Composition
34%VI 33%PC 17%WO
8%PL 4%LI 4%CO

Width
App. 140 cm

Weight
940 g/m² 1316 g/ml
(+/-5%)

Abrasion resistance
80.000 Martindale cycles
(EN ISO 12947 -2)

Pilling
5 (EN ISO 12945-2)

Flammability
California TB 117:2013
C&M EN 1021.1&2
BS 5852 - CRIB 5
(resinated)
C&M BS 5852.0.1
NFPA 260:2019

Light fastness
5 (EN ISO 105-B02)

Fastness to rubbing
Wet 4; Dry 5
(EN ISO 105-X12)

Cleaning
Dry cleaning
Please see the ISO symbols

Note
State of the art weave
composed by multiple
yarns which recreate
a subtle but highly
elegant effect.
A must have.

Composition
34%VI 33%PC 17%WO
8%PL 4%LI 4%CO

Largeur
Env. 140 cm

Poids
940 g/m² 1316 g/ml
(+/-5%)

Résistance à l'abrasion
80.000 Martindale tours
(EN ISO 12947 -2)

Boulochage
5 (EN ISO 12945-2)

Flammabilité
California TB 117:2013
C&M EN 1021.1&2
BS 5852 - CRIB 5
(résiné)
C&M BS 5852.0.1
NFPA 260:2019

Solidité à la lumière
5 (EN ISO 105-B02)

Solidité au frottement
Mouillé 4; Sec 5
(EN ISO 105-X12)

Nettoyage
Lavage à sec
Se référer aux symboles
ISO

Remarque
Tissage de pointe
composé par multiples
fils qui recréent un effet
subtil mais très élégant.
Un incontournable.

Zusammensetzung
34%VI 33%PC 17%WO
8%PL 4%LI 4%CO

Breite
Ca. 140 cm

Gewicht
940 g/m² 1316 g/ml
(+/-5%)

Scheuerfestigkeit
80.000 Martindale
Scheuertouren
(EN ISO 12947 -2)

Pilling
5 (EN ISO 12945-2)

Feuersicherung
California TB 117:2013
C&M EN 1021.1&2
BS 5852 - CRIB 5
(geharzt)
C&M BS 5852.0.1
NFPA 260:2019

Lichtechtheit
5 (EN ISO 105-B02)

Reibechtheit
Nass 4; Trocken 5
(EN ISO 105-X12)

Reinigung
Trockenreinigung
Gemäß ISO Symbolen

Anmerkung
Ein hypermodernes
Gewebe, das aus
mehreren Garnen
besteht, die einen
Effekt von raffinierter
und minimaler
Eleganz erzeugen.
Ein Muss.

Geman Textile Srl
sede legale: corso XXV aprile 167/B
22036 Erba - CO
magazzino: fraz. Ceresa 1
23895 Nibionno LC
+39 031 692067 - info@onemariosirtori.com
onemariosirtori.com



**STANDARD
100**
18CX00015
CENTROCOT

www.oeko-tex.com