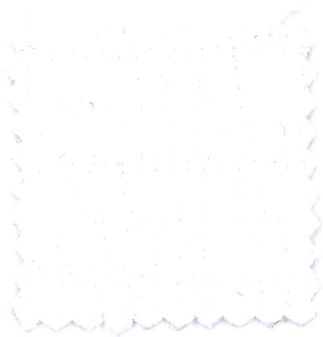


SEER - SEER 01

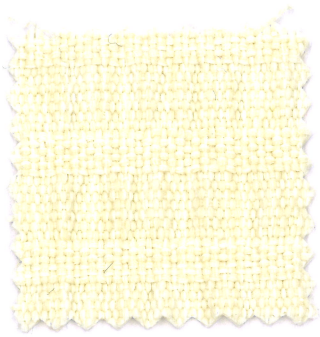
OUTPERFORM

ONE firma

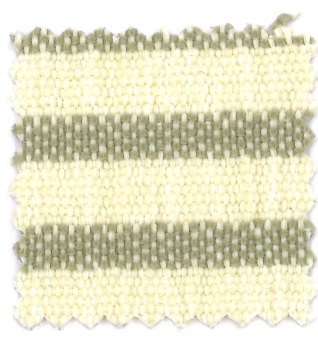
mariosirtori



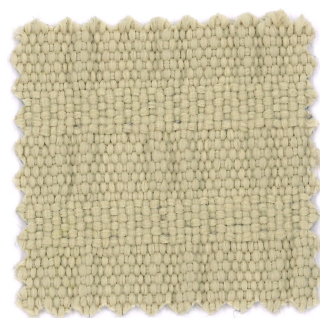
SEER 02



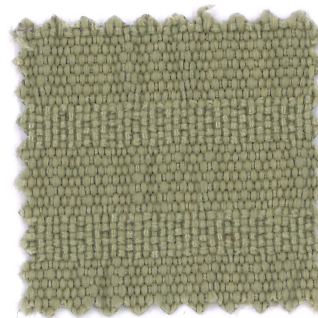
SEER 30



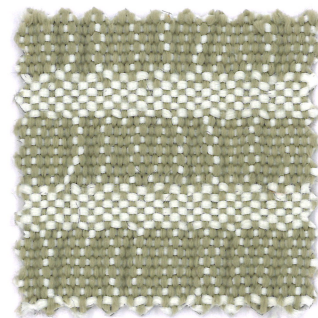
SEER 01 30/1



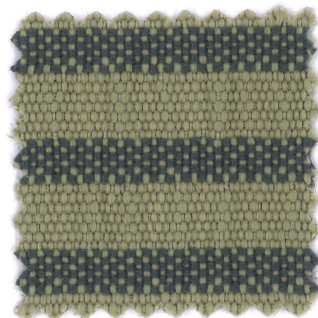
SEER 03



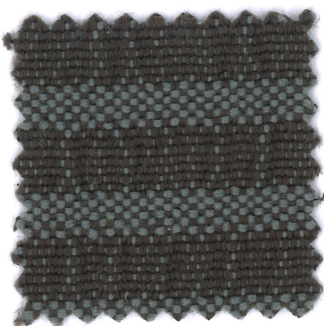
SEER 31



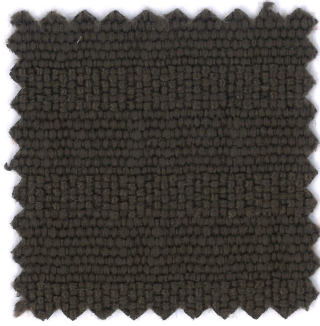
SEER 01 31/1



SEER 01 31/2



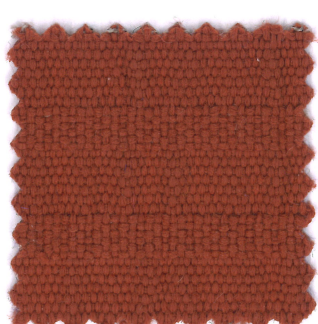
SEER 01 38/1



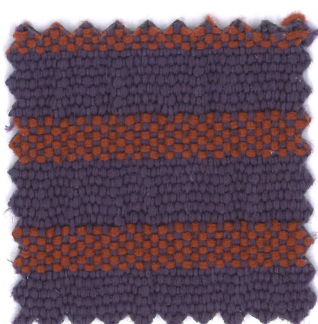
SEER 38



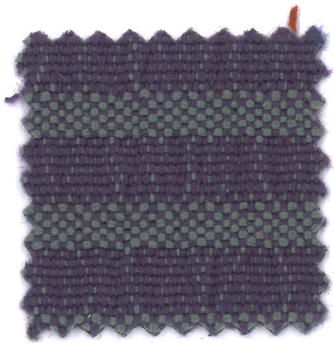
SEER 19



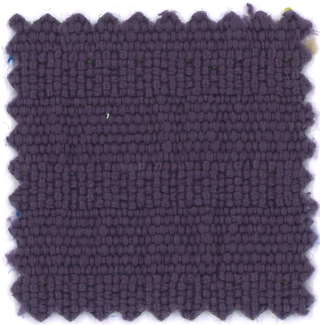
SEER 09



SEER 01 11/2



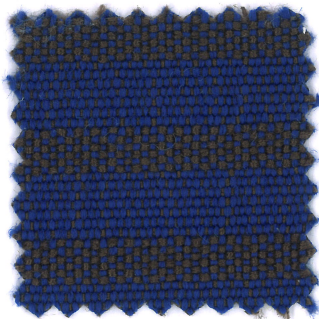
SEER 01 11/1



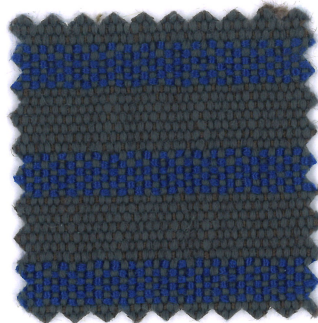
SEER 11



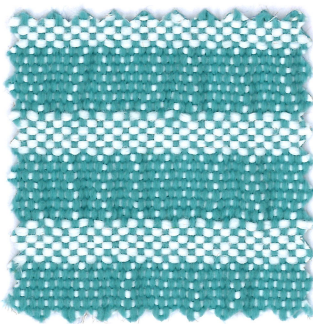
SEER 33



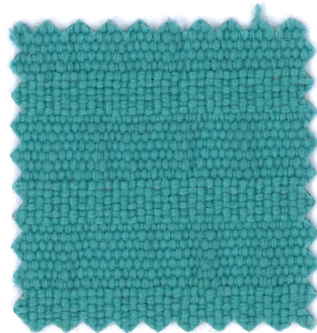
SEER 01 33/1



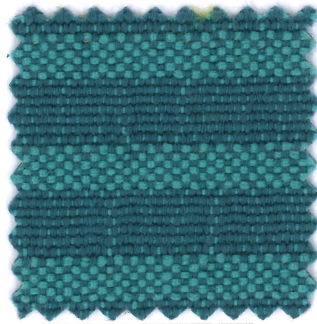
SEER 01 07/3



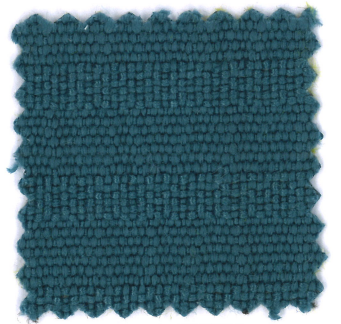
SEER 01 34/1



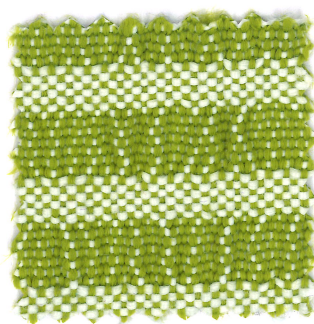
SEER 34



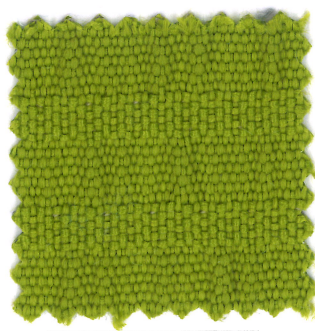
SEER 01 21/1



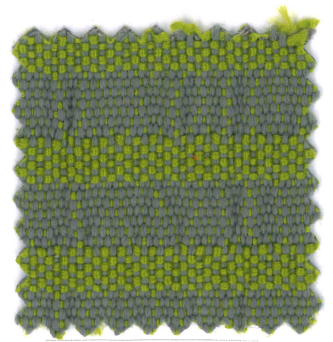
SEER 21



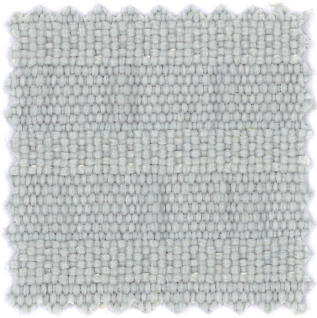
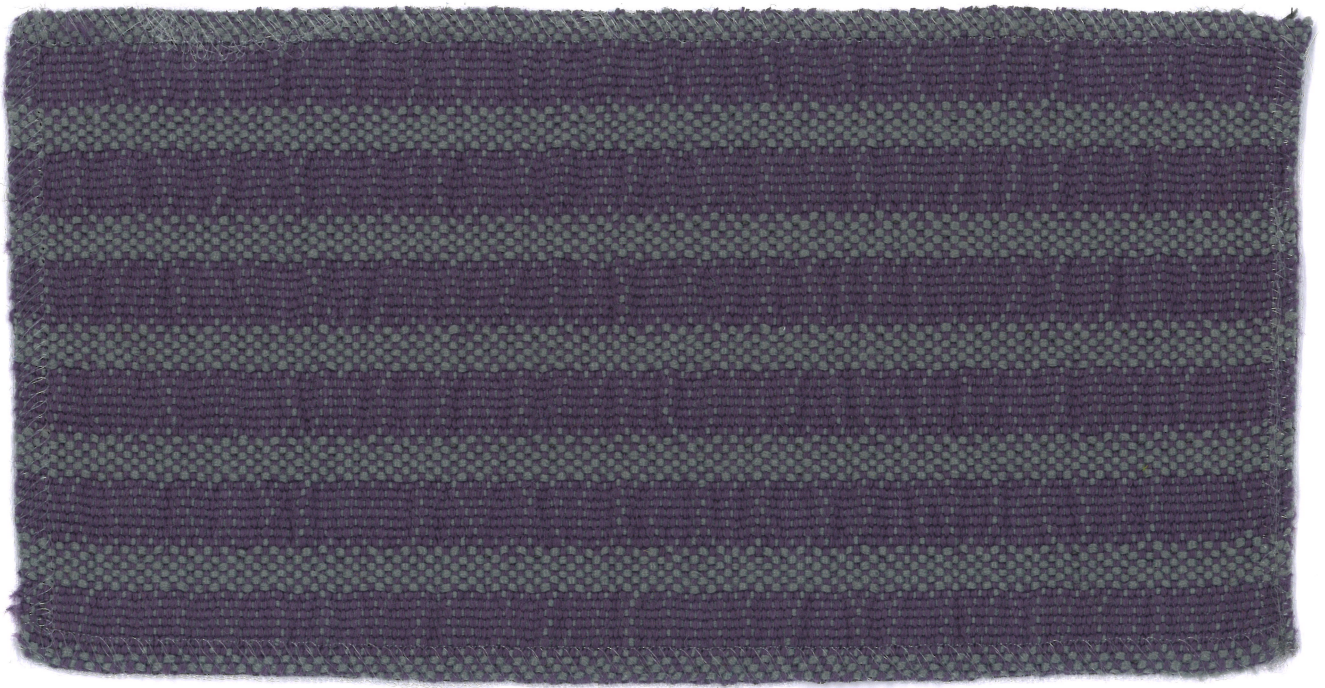
SEER 01 15/1



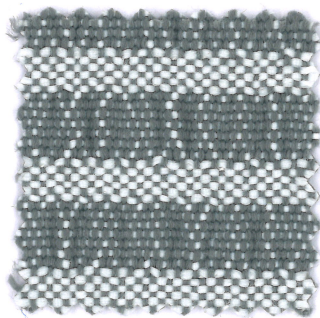
SEER 15



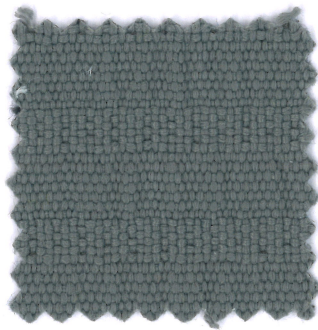
SEER 01 05/1



SEER 04



SEER 01 05/2



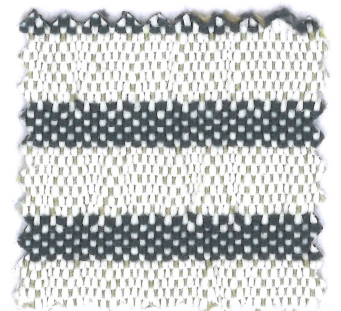
SEER 05



SEER 01 07/1



SEER 07



SEER 01 02/1

SEER - SEER 01



Composizione

100%PP

Altezza

Ca. 136 cm

Peso

458 g/m² 623 g/mtl
(+/-5%)

Resistenza all'abrasione

35.000 cicli Martindale
(EN ISO 12947 -2)

Pilling

5 (EN ISO 12945-2)

Ignifugazione

California TB117:2013
Cigarette BS 5852 Part 0

Solidità alla luce

7 (EN ISO 105-B02)

Solidità allo sfregamento

Umido 5; Secco 5
(EN ISO 105-X12)

Lavaggio

Lavaggio a umido
Seguire simboli ISO

Designer

Cristina Pettenuzzo
OTTO studio

Note

Seersucker, il tessuto estivo per eccellenza, informale e snob quanto basta. Da sempre utilizzato per giacche e pantaloni leggeri, si trasforma e declina in un tessuto da outdoor per arredo. Proposto in una versione maxi, ingrandito, esplosivo, conserva la sua tridimensionalità e la sua natura speciale alla vista e al tatto. Alla versione più tradizionale, righe alternate lisce ed armature bicolore, si affianca una versione tono su tono. I colori naturali della terra, il grigio pietra, l'avorio e l'antracite convivono con il Verde lime, il turquoise acquatico, il blue Klein e un bordeaux intenso mixato con l'arancio. Colori che creano una palette ricca di spunti cromatici, per vestire gli arredi da esterno con freschezza, ispirandosi ai colori della natura circostante, dei fiori, delle foglie, del mare.

Composition

100%PP

Width

App. 136 cm

Weight

458 g/m² 623 g/mtl
(+/-5%)

Abrasion resistance

35.000 Martindale cycles
(EN ISO 12947 -2)

Pilling

5 (EN ISO 12945-2)

Flammability

California TB117:2013
Cigarette BS 5852 Part 0

Light fastness

7 (EN ISO 105-B02)

Fastness to rubbing

Wet 5; Dry 5
(EN ISO 105-X12)

Cleaning

Wet cleaning
Please see the ISO symbols

Designer

Cristina Pettenuzzo
OTTO studio

Note

Seersucker, the summer fabric par excellence, informal and snobbish enough. Always used for light jackets and trousers, it is transformed and declined in an outdoor fabric for furniture. Offered in a maxi version, enlarged, exploded, it retains its three-dimensionality and its special nature to the sight and to the touch. The more traditional version, alternating smooth and two-tone textured stripes, is joined by a tone-on-tone version. The natural colours of the earth, stone grey, ivory and anthracite coexist with lime green, aquatic turquoise, Klein blue and an intense burgundy mixed with orange. Colours that create a palette rich in chromatic ideas, to dress outdoor furniture with freshness, inspired by the colours of the surrounding nature, flowers, leaves, the sea.

Composition

100%PP

Largeur

Env. 136 cm

Poids

458 g/m² 623 g/mtl
(+/-5%)

Résistance à l'abrasion

35.000 Martindale tours
(EN ISO 12947 -2)

Boulochage

5 (EN ISO 12945-2)

Flammabilité

California TB117:2013
Cigarette BS 5852 Part 0

Solidité à la lumière

7 (EN ISO 105-B02)

Solidité au frottement

Mouillé 5; Sec 5
(EN ISO 105-X12)

Nettoyage

Lavage à l'eau
Se référer aux symboles ISO

Designer

Cristina Pettenuzzo
OTTO studio

Remarque

Seersucker, le tissu d'été par excellence, informel et assez snob. Toujours utilisé pour les vestes et pantalons légers, il se transforme et se développe en tissu d'ameublement outdoor. Proposé en version maxi, agrandi, éclaté, il conserve sa tridimensionnalité et sa particularité à la vue et au toucher. La version plus traditionnelle, alternant rayures bicolores unies et texturées, s'accompagne d'une version ton sur ton. Les couleurs naturelles de la terre, gris pierre, ivoire et anthracite cohabitent avec le vert citron, le turquoise aquatique, le bleu Klein et un bordeaux intense mêlé d'orange. Des couleurs qui créent une palette pleine d'idées chromatiques, pour habiller le mobilier d'extérieur avec fraîcheur, en s'inspirant des couleurs de la nature environnante, des fleurs, des feuilles et de la mer.

Zusammensetzung

100%PP

Breite

Ca. 136 cm

Gewicht

458 g/m² 623 g/mtl
(+/-5%)

Scheuerfestigkeit

35.000 Martindale
Scheuertouren
(EN ISO 12947 -2)

Pilling

5 (EN ISO 12945-2)

Feuersicherung

California TB117:2013
Cigarette BS 5852 Part 0

Lichtechtheit

7 (EN ISO 105-B02)

Reibechtheit

Nass 5; Trocken 5
(EN ISO 105-X12)

Reinigung

Nassreinigung
Gemäß ISO Symbolen

Designer

Cristina Pettenuzzo
OTTO studio

Anmerkung

Seersucker, der Sommerstoff schlechthin, informell und versnobt genug. Seit jeher für leichte Jacken und Hosen verwendet, wird er nun in einen Outdoor-Stoff für Möbel umgewandelt. Er wird in einer Maxi-Version angeboten und behält seine Dreidimensionalität und seinen besonderen Charakter für das Auge und den Tastsinn. Die traditionellere Version mit abwechselnd einfarbigen und strukturierten zweifarbigen Streifen wird von einer Ton-in-Ton-Version begleitet. Natürliche Farben Erde, Steingrau, Elfenbein und Anthrazit stehen neben Limettengrün, Aquatürkis, Klein Blau und einem intensiven Burgunderrot gemischt mit Orange. Farben, die eine reiche Farbpalette bilden, um Gartenmöbeln Frische zu verleihen, inspiriert von den Farben der umgebenden Natur, von Blumen, Blättern und dem Meer.



www.oeko-tex.com

Geman Textile Srl

sede legale: corso XXV aprile 167/B
22036 Erba - CO
magazzino: fraz. Ceresa I
23895 Nibionno LC
+39 031 692067 - info@onemariosirtori.com

- 100% recyclable fabrics
- Outperform series in solution dyed polypropylene
- Martindale and pilling suitable for upholstery
- Anti-allergic
- Resistant to fungus, bacteria, sunlight, humidity, chlorine, food stains and sweat
- Compatible with delicate baby skin.
- Eco-friendly (low energy for cleaning, long lasting life cycle, easy to use)
- Thermoregulating and traspiring.
- Resist years of washing, no odour absorption, washing only at 30° cycle and with small detergent.
- Quick drying, very comfortable and lightweight, easy to clean
- Bleach cleanable by using a very small quantity of bleach mixed up with water; it is very important that the bleach is properly removed with water and