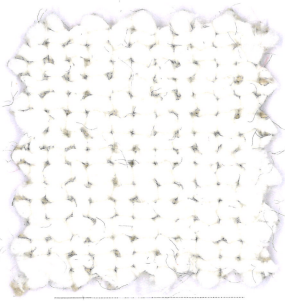
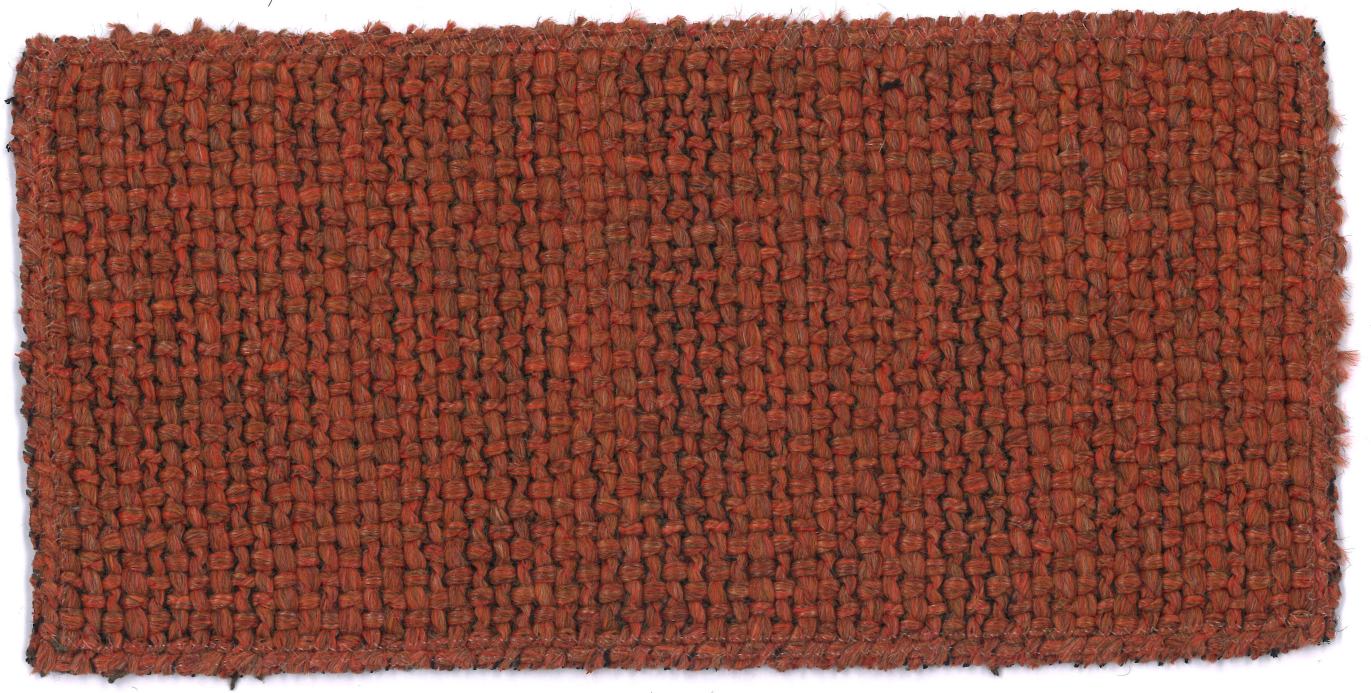


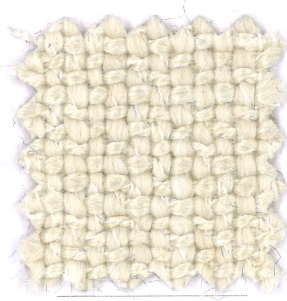
TUNDRA 01

ONE

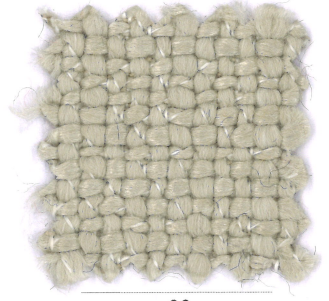
mariosirtori



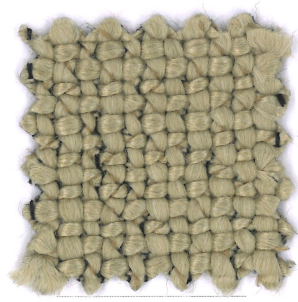
07



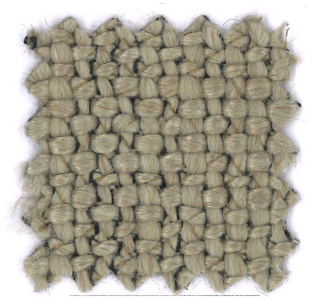
26



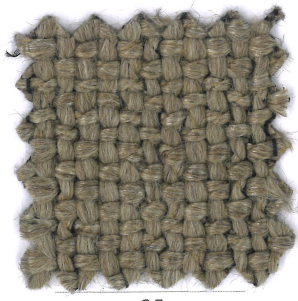
28



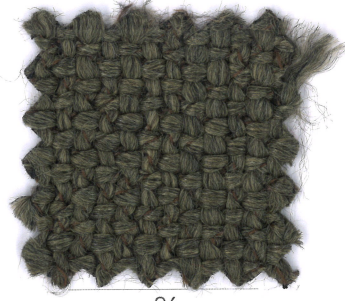
02



04



05



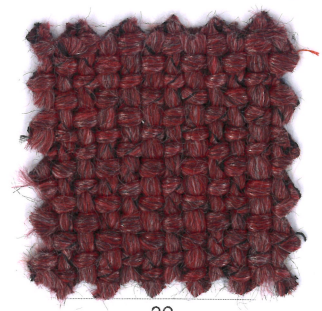
06



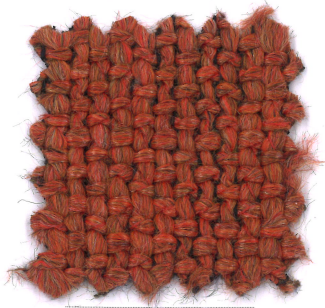
19



16



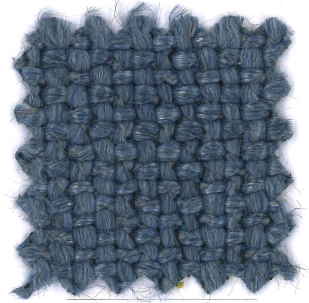
29



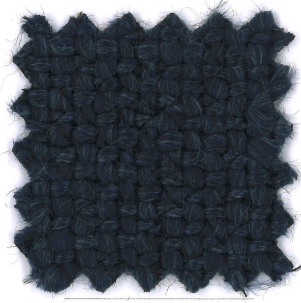
09



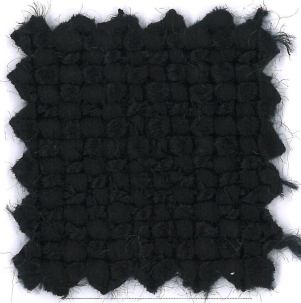
25



27



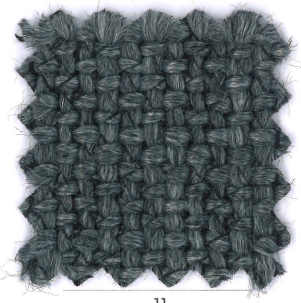
21



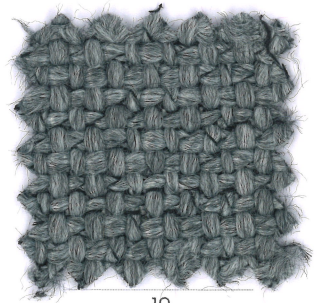
01



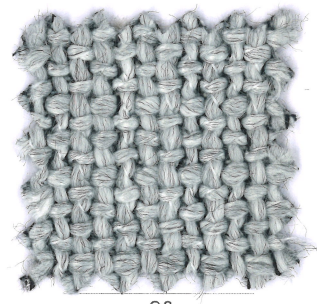
12



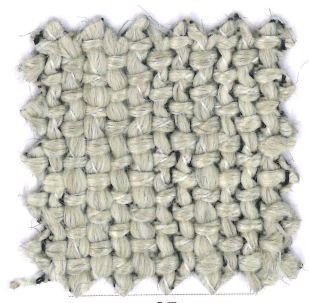
11



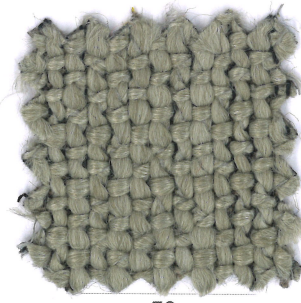
10



08



03



30

TUNDRA 01



Composizione
42%VI 36%CO 16%PC
6%PL

Altezza
Ca. 140 cm

Peso
730 g/m² 1022 g/mtl
(+/-5%)

Resistenza all'abrasione
30.000 cicli Martindale
(EN ISO 12947-2)

Pilling
3/4 (EN ISO 12945-2)

Ignifugazione
California TB 117:2013
C&M BS 5852.1.1979
NFPA 260:2013
C&M EN1021-1&2
BS 5852 Crib 5 (resinato)

Solidità alla luce
4/5 (EN ISO 105-B02)

Solidità allo sfregamento
Umido 4/5; Secco 5
(EN ISO 105-X12)

Lavaggio
Lavaggio a secco
Seguire simboli ISO

Composition
42%VI 36%CO 16%PC
6%PL

Width
App. 140 cm

Weight
730 g/m² 1022 g/mtl
(+/-5%)

Abrasion resistance
30.000 Martindale cycles
(EN ISO 12947-2)

Pilling
3/4 (EN ISO 12945-2)

Flammability
California TB 117:2013
C&M BS 5852.1.1979
NFPA 260:2013
C&M EN1021-1&2
BS 5852 Crib 5 (resinated)

Light fastness
4/5 (EN ISO 105-B02)

Fastness to rubbing
Wet 4/5; Dry 5
(EN ISO 105-X12)

Cleaning
Dry-cleaning
Please see the ISO symbols

Composition
42%VI 36%CO 16%PC
6%PL

Largeur
Env. 140 cm

Poids
730 g/m² 1022 g/mtl
(+/-5%)

Résistance à l'abrasion
30.000 Martindale tours
(EN ISO 12947-2)

Boulochage
3/4 (EN ISO 12945-2)

Flammabilité
California TB 117:2013
C&M BS 5852.1.1979
NFPA 260:2013
C&M EN1021-1&2
BS 5852 Crib 5 (résiné)

Solidité à la lumière
4/5 (EN ISO 105-B02)

Solidité au frottement
Mouillé 4/5; Sec 5
(EN ISO 105-X12)

Nettoyage
Lavage à sec
Se référer aux symboles
ISO

Zusammensetzung
42%VI 36%CO 16%PC
6%PL

Breite
Ca. 140 cm

Gewicht
730 g/m² 1022 g/mtl
(+/-5%)

Scheuerfestigkeit
30.000 Martindale
Scheuertouren
(EN ISO 12947-2)

Pilling
3/4 (EN ISO 12945-2)

Feuersicherung
California TB 117:2013
C&M BS 5852.1.1979
NFPA 260:2013
C&M EN1021-1&2
BS 5852 Crib 5 (geharzt)

Lichtechtheit
4/5 (EN ISO 105-B02)

Reibechtheit
Nass 4/5; Trocken 5
(EN ISO 105-X12)

Reinigung
Trockenreinigung
Gemäß ISO Symbolen

Geman Textile G.&G. Srl

sede legale: corso XXV aprile 167/B

22036 Erba - CO

magazzino: fraz. Ceresa 1

23895 Nibionno LC

onemariosirtori.com