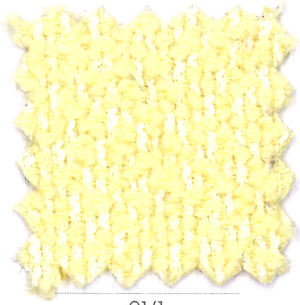


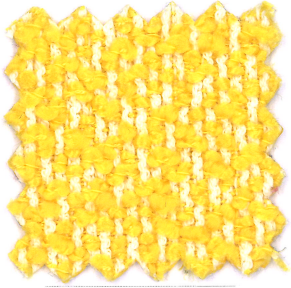
SHIRLEY CS

ONE ^{firma}

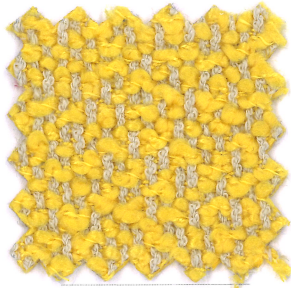
mariosirto



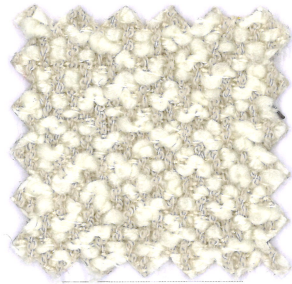
01/1



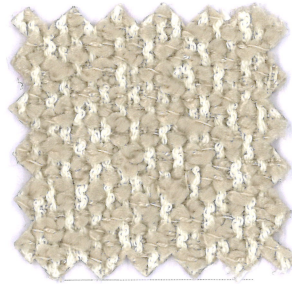
01/2



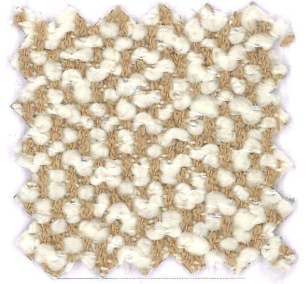
04/3



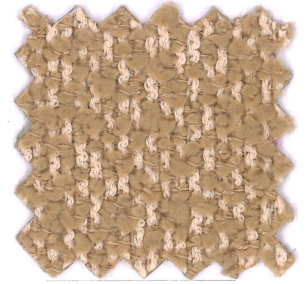
04/4



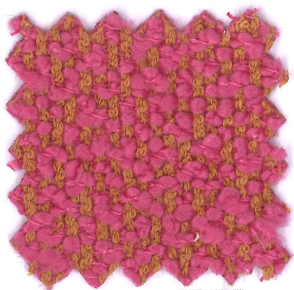
01/5



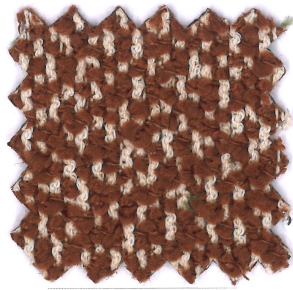
08/6



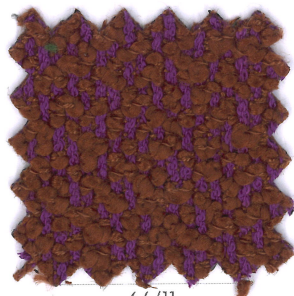
40/7



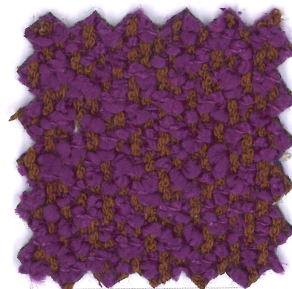
34/8



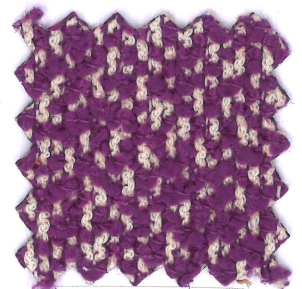
40/10



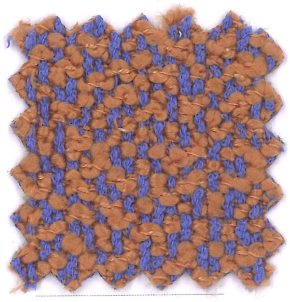
64/11



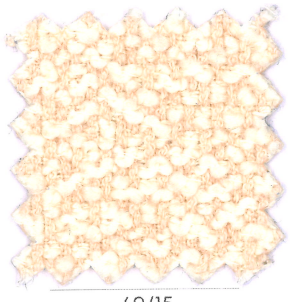
38/12



40/13



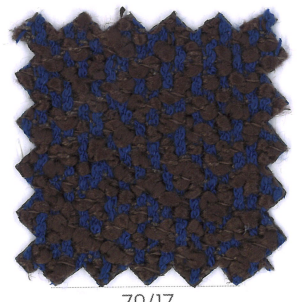
68/14



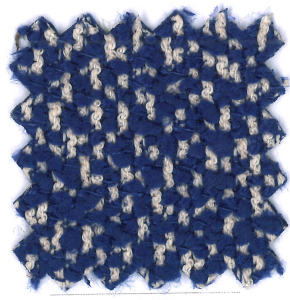
40/15



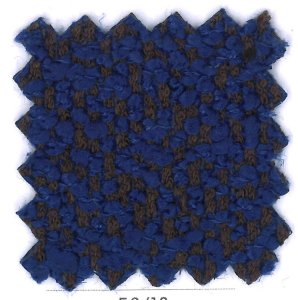
40/16



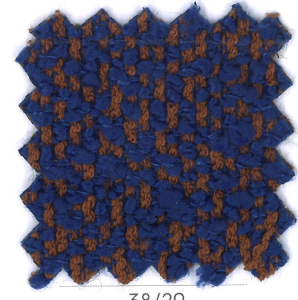
70/17



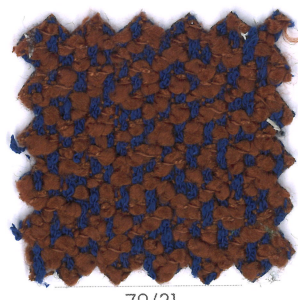
40/19



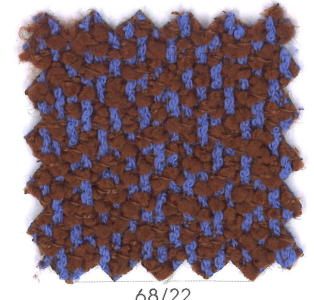
58/18



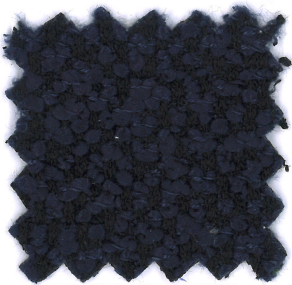
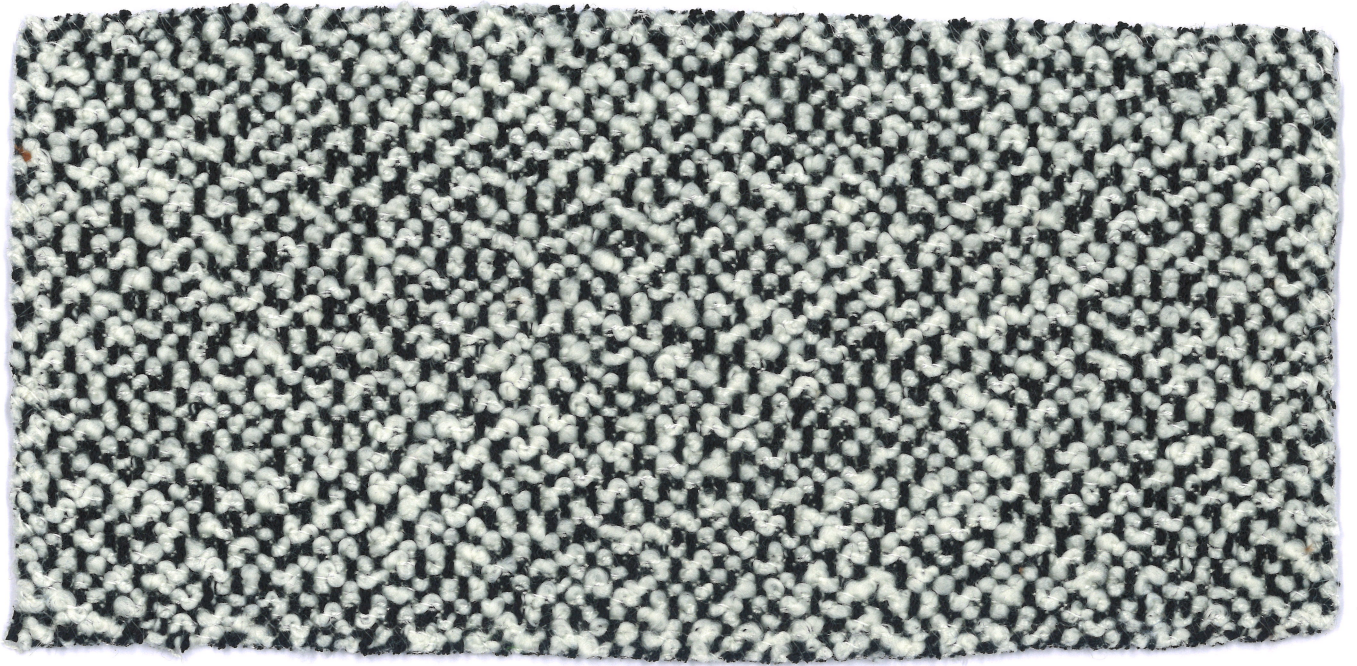
38/20



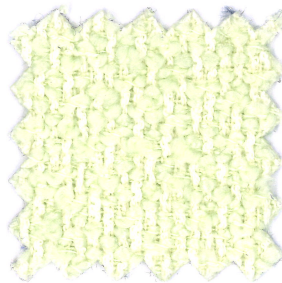
70/21



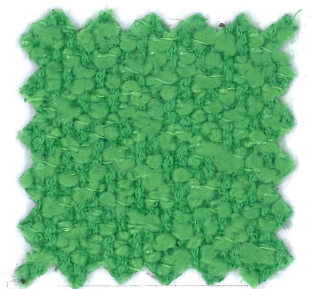
68/22



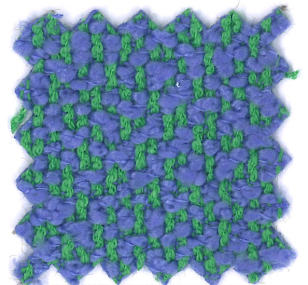
99/24



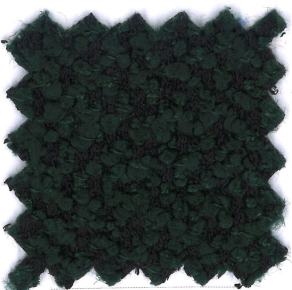
01/25



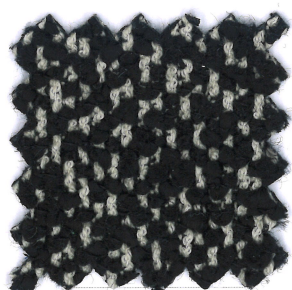
19/26



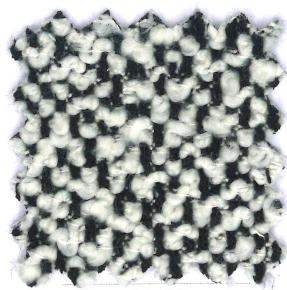
19/28



99/29



04/31



99/32

SHIRLEY CS



Composizione
100% Trevira CS

Altezza
Ca. 140 cm

Peso
520 g/m² 728 g/mtl
(+/-5%)

Resistenza all'abrasione
96.000 cicli Martindale
(EN ISO 12947-2)

Pilling
4 (EN ISO 12945-2)

Ignifugazione
UNI 9175 - Classe 1-IM
California TB 117:2013
C&M EN1021-1-2
BS 5852 - Part 0-1-5
(C&M and crib 5)
DIN 4102-B1
NFPA 260-2019
IMO MSC 307 (88)
Annex 1 Part 7-8

Solidità alla luce
5 (EN ISO 105-B02)

Solidità allo sfregamento
Umido 4/5; Secco 4/5
(EN ISO 105-X12)

Lavaggio
Lavaggio a umido
Seguire simboli ISO
Restingimento ca. 2,5%

Designer
CMP Design

Note
Tessuto tinto in filo anche per utilizzo tendaggio. L'eventuale presenza di irregolarità nel filato è da considerare caratteristica del prodotto trattandosi di filo effetto naturale. Le differenze cromatiche che si riscontrano fra i vari lotti, sono da intendersi normali e da valutare con le abituali tolleranze dei tessuti tinti in filo. Lavorare separatamente i vari lotti di consegna.

Composition
100% Trevira CS

Width
App. 140 cm

Weight
520 g/m² 728 g/mtl
(+/-5%)

Abrasion resistance
96.000 Martindale cycles
(EN ISO 12947-2)

Pilling
4 (EN ISO 12945-2)

Flammability
UNI 9175 - Class 1-IM
California TB 117:2013
C&M EN1021-1-2
BS 5852 - Part 0-1-5
(C&M and crib 5)
DIN 4102-B1
NFPA 260-2019
IMO MSC 307 (88)
Annex 1 Part 7-8

Light fastness
5 (EN ISO 105-B02)

Fastness to rubbing
Wet 4/5; Dry 4/5
(EN ISO 105-X12)

Cleaning
Wet cleaning
Please see the ISO symbols
Shrinkage app. 2,5%

Designer
CMP Design

Note
This fabric is yarn dyed and is suitable also for curtains. Possible irregularities of the yarn must be considered as a feature of the product because it's a yarn with natural effect. Batch to batch chromatic variations must be considered as normal and are to be evaluated with the usual tolerance of this type of fabric. Work separately different delivery lots.

Composition
100% Trevira CS

Largeur
Env. 140 cm

Poids
520 g/m² 728 g/mtl
(+/-5%)

Résistance à l'abrasion
96.000 Martindale tours
(EN ISO 12947-2)

Boulochage
4 (EN ISO 12945-2)

Flammabilité
UNI 9175 - Classe 1-IM
California TB 117:2013
C&M EN1021-1-2
BS 5852 - Part 0-1-5
(C&M and crib 5)
DIN 4102-B1
NFPA 260-2019
IMO MSC 307 (88)
Annex 1 Part 7-8

Solidité à la lumière
5 (EN ISO 105-B02)

Solidité au frottement
Mouillé 4/5; Sec 4/5
(EN ISO 105-X12)

Nettoyage
Lavage à l'eau
Se référer aux symboles ISO
Rétrécissement 2,5% env.

Designer
CMP Design

Remarque
Tissu teint en fil adapté pour les rideaux. Les éventuelles irrégularités dans le fil sont à considérer comme des caractéristiques des fibres avec un effet naturel. Il peut y avoir des différences chromatiques d'un lot à l'autre dans des proportions d'usage qui sont à considérer selon les normes habituelles de tolérance en matière de teinture en fil. Il est préférable, lors des confections, de ne pas mélanger les divers lots de teinture.

Zusammensetzung
100% Trevira CS

Breite
Ca. 140 cm

Gewicht
520 g/m² 728 g/mtl
(+/-5%)

Scheuerfestigkeit
96.000 Martindale Scheuertouren
(EN ISO 12947-2)

Pilling
4 (EN ISO 12945-2)

Feuersicherung
UNI 9175 - Klasse 1-IM
California TB 117:2013
C&M EN1021-1-2
BS 5852 - Part 0-1-5
(C&M and crib 5)
DIN 4102-B1
NFPA 260-2019
IMO MSC 307 (88)
Annex 1 Part 7-8

Lichtechtheit
5 (EN ISO 105-B02)

Reibechtheit
Nass 4/5; Trocken 4/5
(EN ISO 105-X12)

Reinigung
Nassreinigung
Gemäß ISO Symbolen
Einlaufen ca. 2,5%

Designer
CMP Design

Anmerkung
Garngefärbtes Gewebe geeignet für Vorhänge. Mögliche Fadenumregelmäßigkeiten sind als warentypische Eigenschaften zu betrachten, da es ist ein Garn mit natürlicher Wirkung. Farbunterschiede zwischen den einzelnen Chargen sind innerhalb der üblichen Toleranzen garngefärbter Stoffe als normal anzusehen. Verschiedene Lieferpartien sind separat zu verarbeiten.

Geman Textile G.&G. Srl
sede legale: corso XXV aprile 167/B
22036 Erba - CO
magazzino: fraz. Ceresa 1
23895 Nibionno LC
onemariosirfori.com



STANDARD 100

18CX00015
CENTROCOT

www.oeko-tex.com



Trevira CS Club
Silver Member
2016

