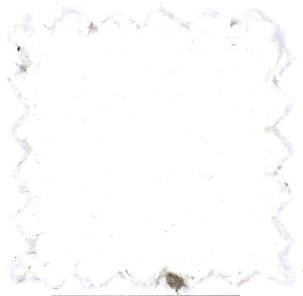
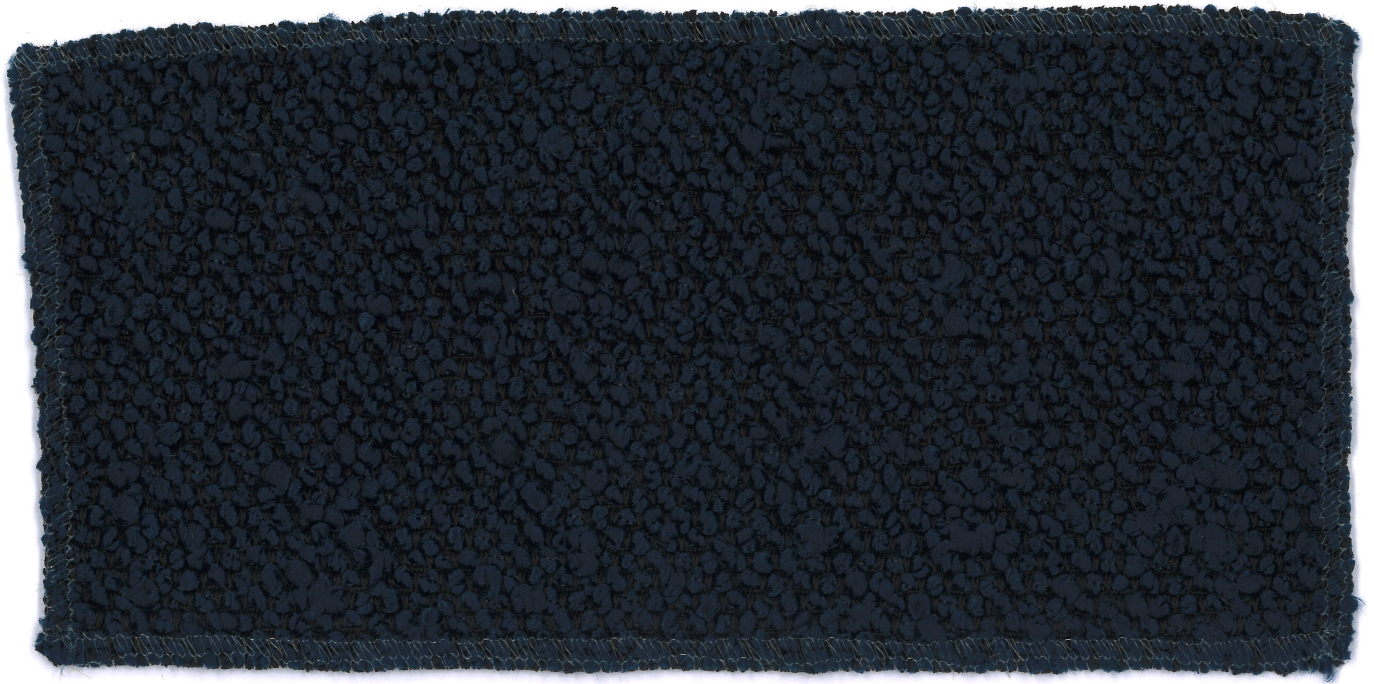


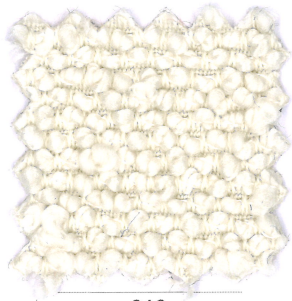
ESKIMO CS

ONE

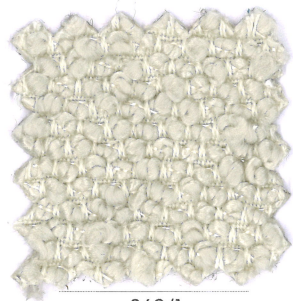
mariosirtoni



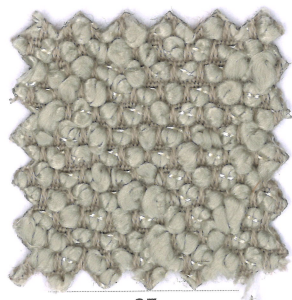
01



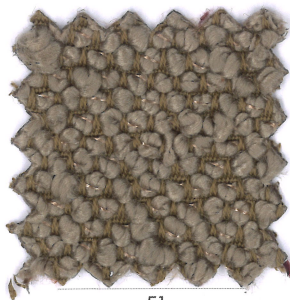
269



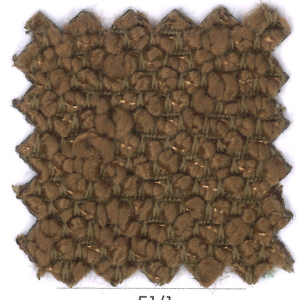
269/1



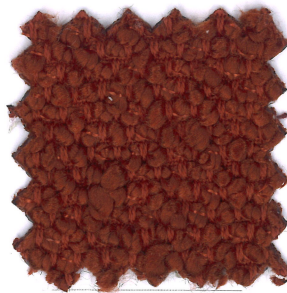
03



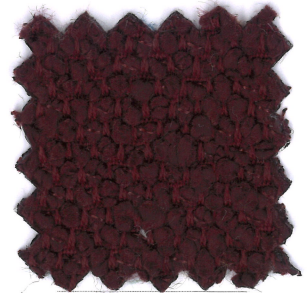
51



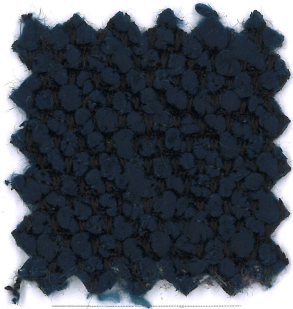
51/1



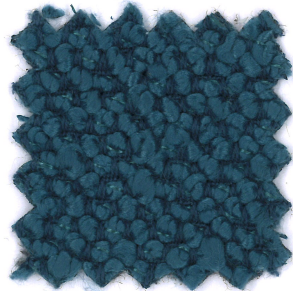
31



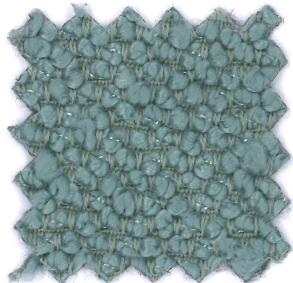
41



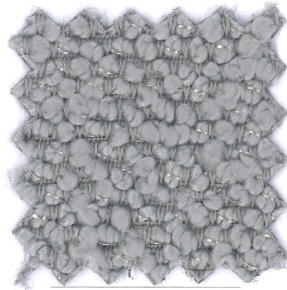
262



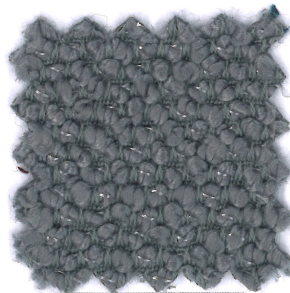
71



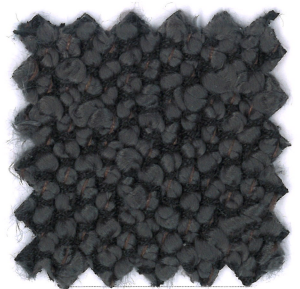
80



81



410



262/1



43



262/2

ESKIMO CS



Composizione
100% Trevira CS



Altezza
Ca. 140 cm



Peso
660 g/m² 924 g/mtl
(+/-5%)



Resistenza all'abrasione
170.000 cicli Martindale
(EN ISO 12947-2)

Pilling
4 (EN ISO 12945-2)

Ignifugazione
California TB 117:2013
C&M EN 1021-1&2
C&M BS 5852.1.1979
UNI 9175 Classe 1-IM
DIN 4102-B1
NFPA 260:2019
NF P 92-503-507 M1
IMO MSC 307(88)
Annex 1 Part. 8

Solidità alla luce
5 (EN ISO 105-B02)

Solidità allo sfregamento
Umido 5; Secco 5
(EN ISO 105-X12)

Lavaggio
Lavaggio a umido
Seguire simboli ISO

Note
Tessuto in bouclé ignifugo
tinto in filo, che unisce
alte performance
tecniche ad una mano
morbida e gradevole; la
sua texture presenta effetti
volutamente irregolari per
giocare su dimensioni
differenti.
È un prodotto versatile, di
facile manutenzione, che
si presta ad abbellire
molteplici ambienti, da
eleganti luoghi pubblici
a sofisticati ambiti
domestici.

Composition
100% Trevira CS

Width
App. 140 cm

Weight
660 g/m² 924 g/mtl
(+/-5%)

Abrasion resistance
170.000 Martindale cycles
(EN ISO 12947-2)

Pilling
4 (EN ISO 12945-2)

Flammability
California TB 117:2013
C&M EN 1021-1&2
C&M BS 5852.1.1979
UNI 9175 Class 1-IM
DIN 4102-B1
NFPA 260:2019
NF P 92-503-507 M1
IMO MSC 307(88)
Annex 1 Part. 8

Light fastness
5 (EN ISO 105-B02)

Fastness to rubbing
Wet 5; Dry 5
(EN ISO 105-X12)

Cleaning
Wet cleaning
Please see the ISO symbols

Note
Yarn-dyed Flame Retardant
bouclé fabric which
combines high technical
performance with a soft
and pleasant hand; its
texture has deliberately
irregular effects to play
with different dimensions.
It is a versatile,
easy-to-maintain product
that suits perfectly to
decorate multiple
environments, from elegant
public places to
sophisticated residences.

Composition
100% Trevira CS

Largeur
Env. 140 cm

Poids
660 g/m² 924 g/mtl
(+/-5%)

Résistance à l'abrasion
170.000 Martindale tours
(EN ISO 12947-2)

Boulochage
4 (EN ISO 12945-2)

Flammabilité
California TB 117:2013
C&M EN 1021-1&2
C&M BS 5852.1.1979
UNI 9175 Classe 1-IM
DIN 4102-B1
NFPA 260:2019
NF P 92-503-507 M1
IMO MSC 307(88)
Annex 1 Part. 8

Solidité à la lumière
5 (EN ISO 105-B02)

Solidité au frottement
Mouillé 5; Sec 5
(EN ISO 105-X12)

Nettoyage
Lavage à l'eau
Se référer aux symboles
ISO

Remarque
Tissu bouclé non feu teint
en fil qui combine des
performances techniques
élevées à une main douce
et agréable; sa texture a
des effets volontairement
irréguliers pour jouer sur
différentes dimensions.
C'est un produit polyvalent,
facile à entretenir et qui
se prête à embellir de
multiples environnements,
des lieux publics élégants
à des contextes résidentiels
sophistiqués.

Zusammensetzung
100% Trevira CS

Breite
Ca. 140 cm

Gewicht
660 g/m² 924 g/mtl
(+/-5%)

Scheuerfestigkeit
170.000 Martindale
Scheuertouren
(EN ISO 12947-2)

Pilling
4 (EN ISO 12945-2)

Feuersicherung
California TB 117:2013
C&M EN 1021-1&2
C&M BS 5852.1.1979
UNI 9175 Klasse 1-IM
DIN 4102-B1
NFPA 260:2019
NF P 92-503-507 M1
IMO MSC 307(88)
Annex 1 Part. 8

Lichtechtheit
5 (EN ISO 105-B02)

Reibechtheit
Nass 5; Trocken 5
(EN ISO 105-X12)

Reinigung
Nassreinigung
Gemäß ISO Symbolen

Anmerkung
Garngefärbter feuerfester
Bouclé-Stoff kombiniert
hohe technische Leistung
mit einer weichen und
angenehmen Haptik oder
Griff; Seine Textur hat
absichtlich unregelmäßige
Effekte, um mit verschiedenen
Lichteinflüssen zu spielen.
Es ist ein vielseitiges Produkt,
leicht zu pflegen und eignet
sich zur Verschönerung vieler
Umgebungen, eleganter
öffentlicher Orte und
anspruchsvoller häuslicher
Umgebungen.

Geman Textile G.&G. Srl
sede legale: corso XXV aprile 167/B
22036 Erba - CO
magazzino: fraz. Ceresa 1
23895 Nibionno LC
onemariosirtori.com



**STANDARD
100**

18CX00015
CENTROCOT

www.oeko-tex.com



Trevira CS Club
Silver Member
2016

