

FENICE GRS

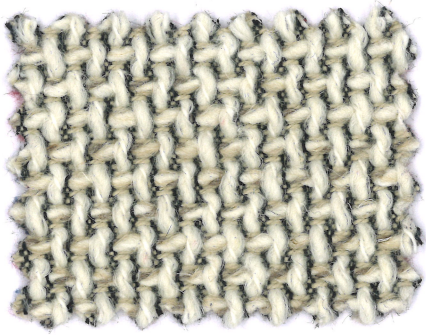
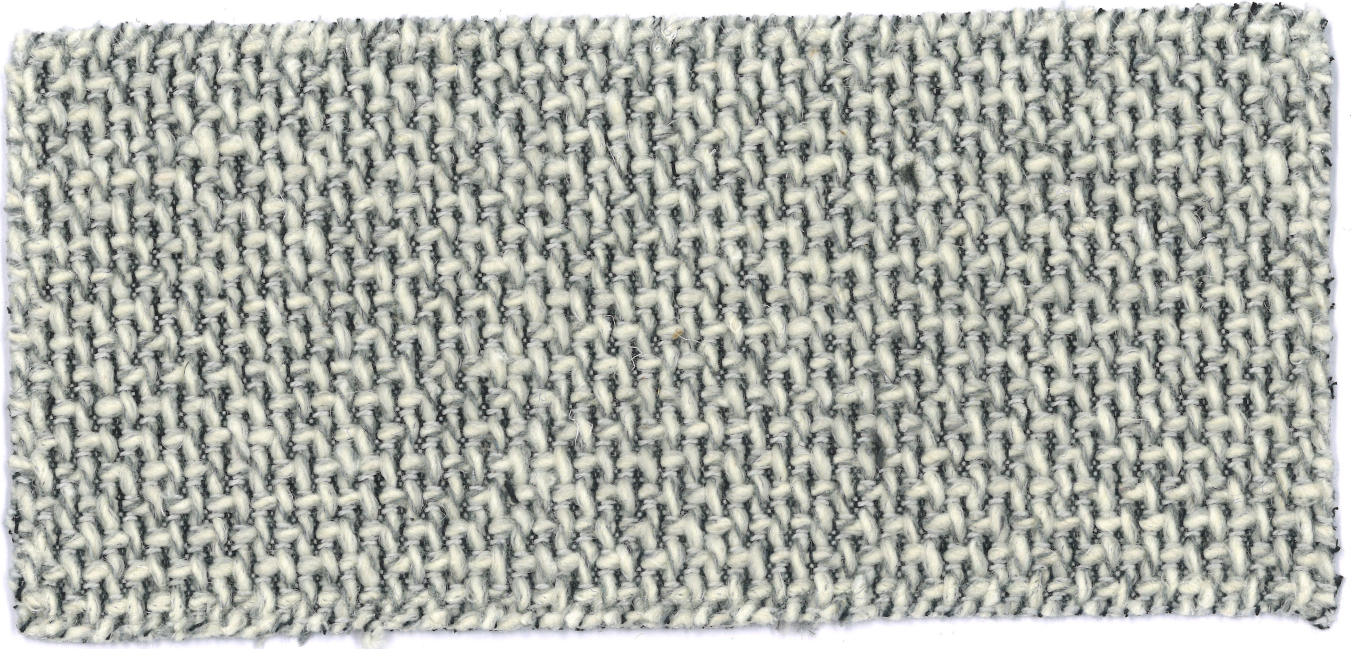


**LOOK
AT OUR
FOREST**

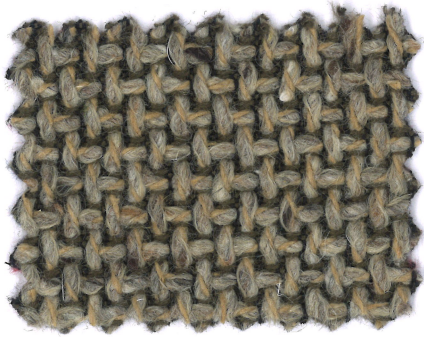


ONE

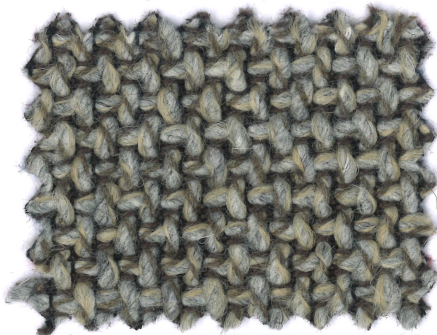
mariosirtori



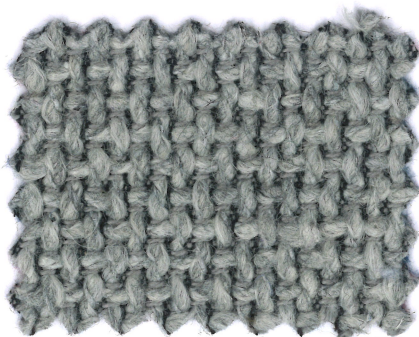
01



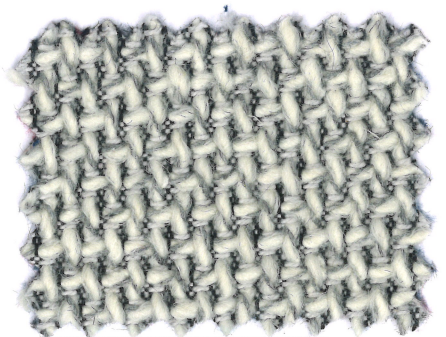
08



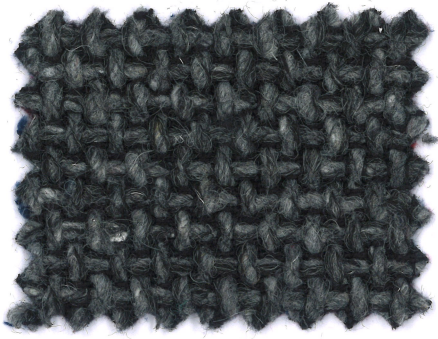
06



81



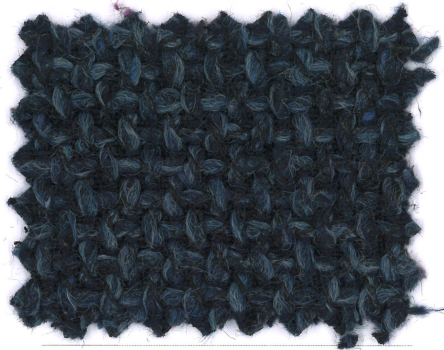
82



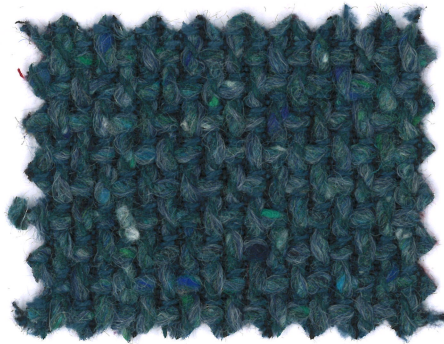
20



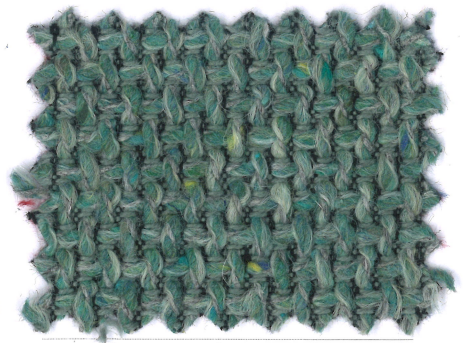
40



70



71



80



22

FENICE GRS



Composizione

32%CO 25%RWO
25%RPC 12%PL
4%WO 2%PC

Altezza

Ca. 140 cm

Peso

600 g/m² 840 g/mtl
(+/-5%)

Resistenza all'abrasione

36.000 cicli Martindale
(EN ISO 12947-2)

Pilling

3/4 (EN ISO 12945-2)

Ignifugazione

California TB117:2013
C&M BS 5852.1.1979

Solidità alla luce

4/5 (EN ISO 105-B02)

Solidità allo sfregamento

Umido 4; Secco 4
(EN ISO 105-X12)

Lavaggio

Lavaggio a secco
Seguire simboli ISO

Composition

32%CO 25%RWO
25%RPC 12%PL
4%WO 2%PC

Width

App. 140 cm

Weight

600 g/m² 840 g/mtl
(+/-5%)

Abrasion resistance

36.000 Martindale cycles
(EN ISO 12947-2)

Pilling

3/4 (EN ISO 12945-2)

Flammability

California TB117:2013
C&M BS 5852.1.1979

Light fastness

4/5 (EN ISO 105-B02)

Fastness to rubbing

Wet 4; Dry 4
(EN ISO 105-X12)

Cleaning

Dry-cleaning
Please see the ISO symbols

Composition

32%CO 25%RWO
25%RPC 12%PL
4%WO 2%PC

Largeur

Env. 140 cm

Poids

600 g/m² 840 g/mtl
(+/-5%)

Résistance à l'abrasion

36.000 Martindale tours
(EN ISO 12947-2)

Boulochage

3/4 (EN ISO 12945-2)

Flammabilité

California TB117:2013
C&M BS 5852.1.1979

Solidité à la lumière

4/5 (EN ISO 105-B02)

Solidité au frottement

Mouillé 4; Sec 4
(EN ISO 105-X12)

Nettoyage

Lavage à sec
Se référer aux symboles
ISO

Zusammensetzung

32%CO 25%RWO
25%RPC 12%PL
4%WO 2%PC

Breite

Ca. 140 cm

Gewicht

600 g/m² 840 g/mtl
(+/-5%)

Scheuerfestigkeit

36.000 Martindale
Scheuertouren
(EN ISO 12947-2)

Pilling

3/4 (EN ISO 12945-2)

Feuersicherung

California TB117:2013
C&M BS 5852.1.1979

Lichtechtheit

4/5 (EN ISO 105-B02)

Reibechtheit

Nass 4; Trocken 4
(EN ISO 105-X12)

Reinigung

Trockenreinigung
Gemäß ISO Symbolen



- GRS certified textile (Global Recycled System)
- Woven with Post-Consumer material obtained from processing previous fabrics aiming to minimizing environmental impact and pushing a circular economy
- Products part of our actual company forest developed in partnership with Treedom - let's green the planet
- Supply chain specifically designed to be strictly local (all made in Italy) to minimize transport of raw materials and unfinished goods in order to significantly reducing CO2 emissions compared
- Compliant with European Union REACH legislation, adopted to improve the protection of human health and the environment from the risks posed by chemical substances and for the promotion of alternative danger assessing methods purpose to reduce the number of tests conducted on animals

Geman Textile G.&G. Srl

sede legale: corso XXV aprile 167/B
22036 Erba - CO
magazzino: fraz. Ceresa 1
23895 Nibionno LC
onemariosirtori.com



STANDARD
100

18CX00015
CENTROCOT

www.oeko-tex.com