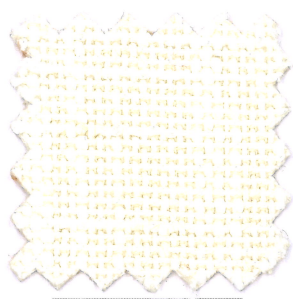


---

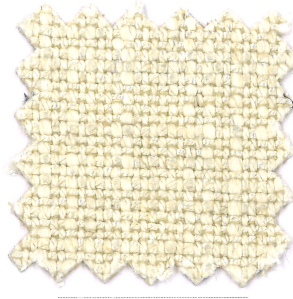
**DARWIN**



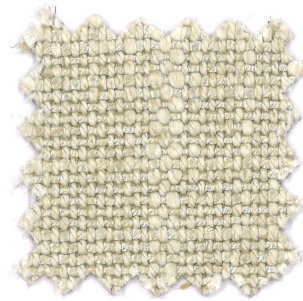
699



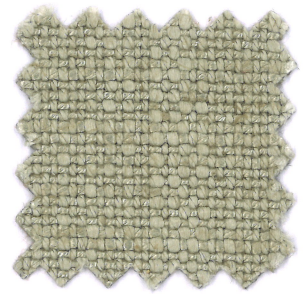
01



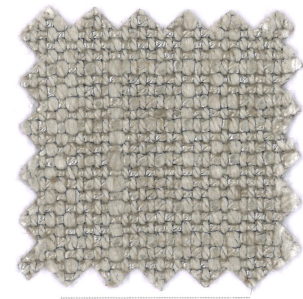
02



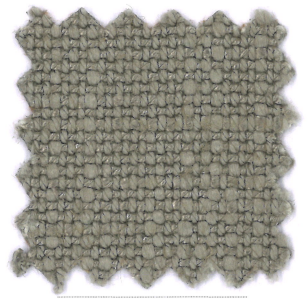
06



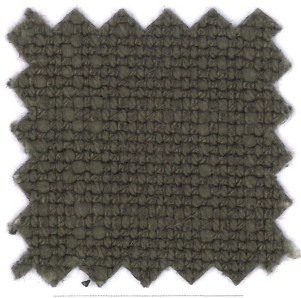
09



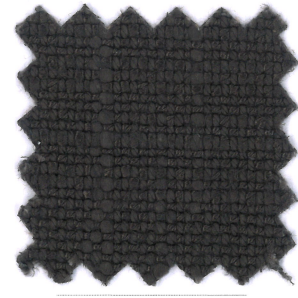
1626



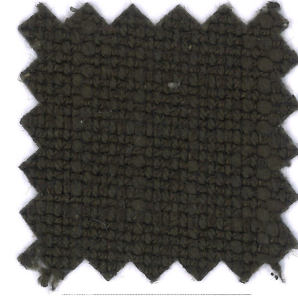
1628



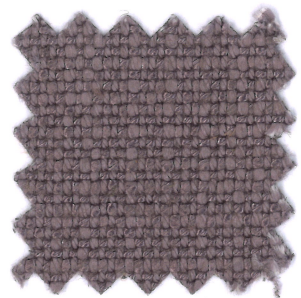
11



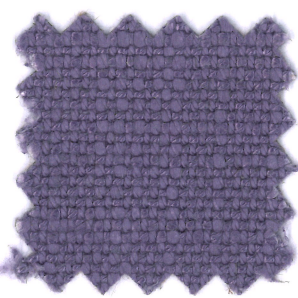
23



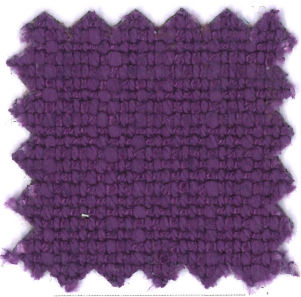
146



16



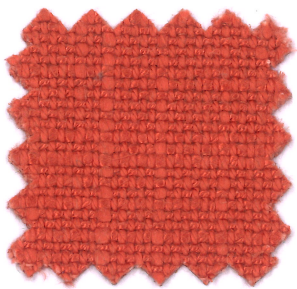
138



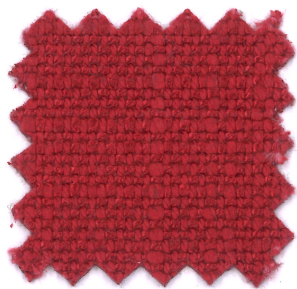
14



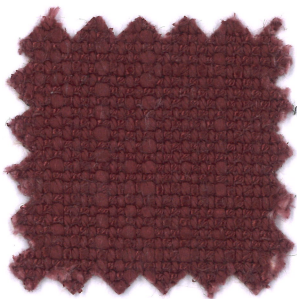
147



148



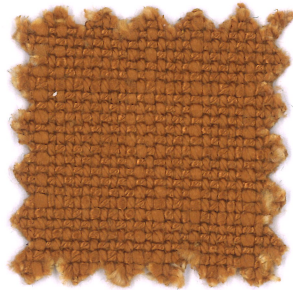
112



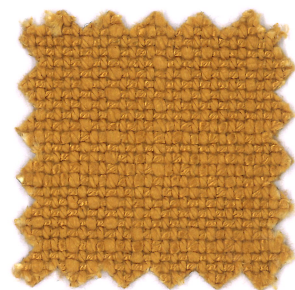
139



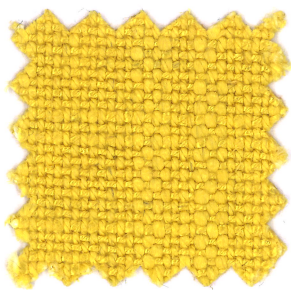
140



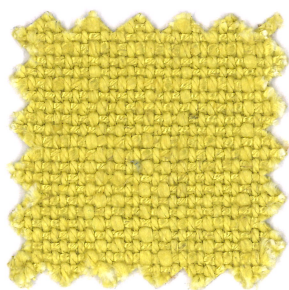
141



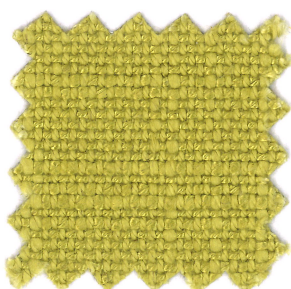
142



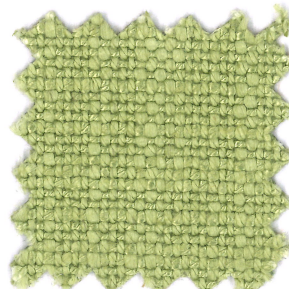
143



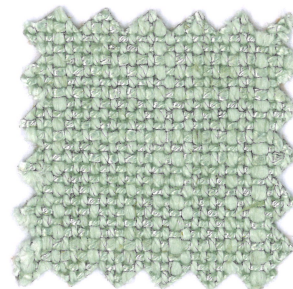
1413



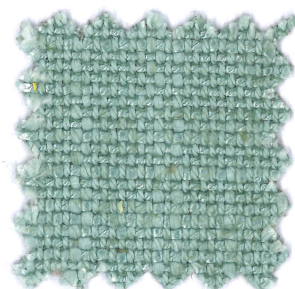
144



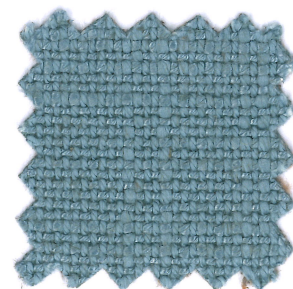
M816



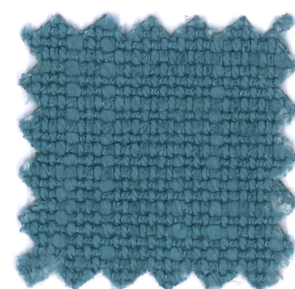
18



19

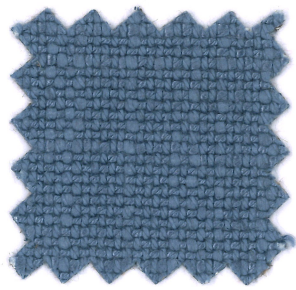
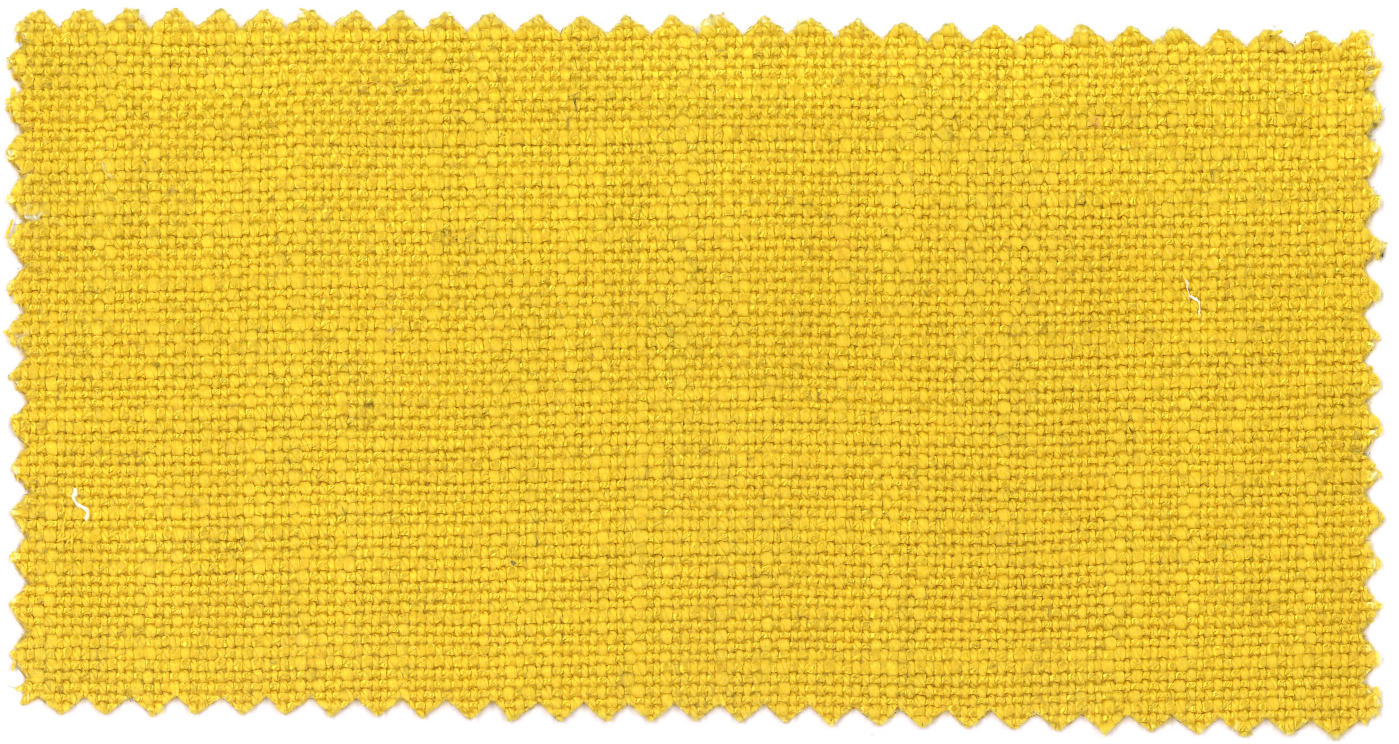


1633

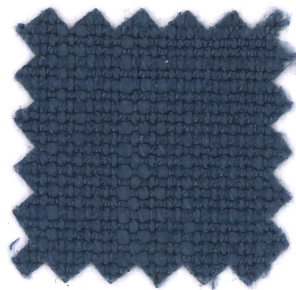


20





136



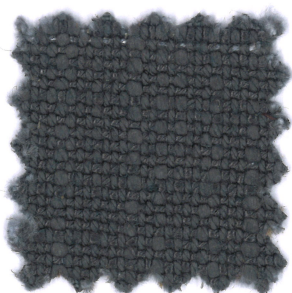
1006



149



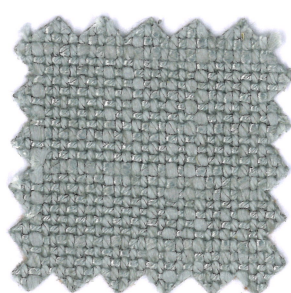
2026



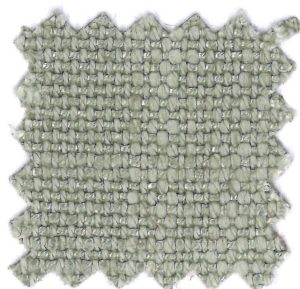
151



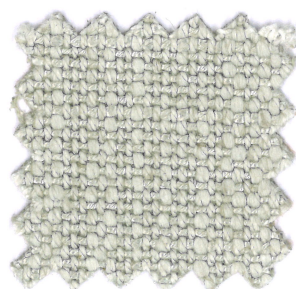
24



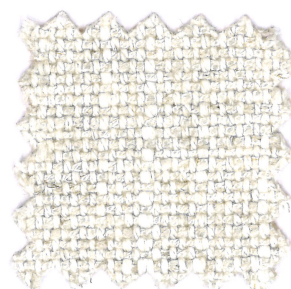
150



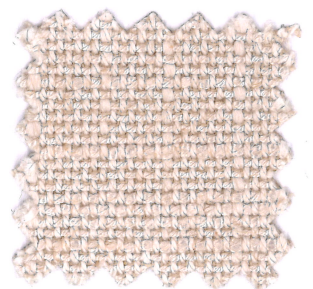
25



26



07



145

# DARWIN



**Composizione**  
58%VI 31%CO 11%LI

**Altezza**  
Ca. 140 cm

**Peso**  
566 g/m<sup>2</sup> 793 g/mtl  
(+/-5%)

**Resistenza all'abrasione**  
>40.000 cicli Martindale  
(EN ISO 12947-2)

**Pilling**  
3/4 (EN ISO 12945-2)

**Ignifugazione**  
California TB117:2013  
NFPA 260:2019

**Solidità alla luce**  
4 (EN ISO 105-B02)

**Solidità allo sfregamento**  
Umido 3/4; Secco 4/5  
(EN ISO 105-X12)

**Lavaggio**  
Lavaggio a secco  
Seguire simboli ISO

**Composition**  
58%VI 31%CO 11%LI

**Width**  
App. 140 cm

**Weight**  
566 g/m<sup>2</sup> 793 g/mtl  
(+/-5%)

**Abrasion resistance**  
>40.000 Martindale cycles  
(EN ISO 12947-2)

**Pilling**  
3/4 (EN ISO 12945-2)

**Flammability**  
California TB117:2013  
NFPA 260:2019

**Light fastness**  
4 (EN ISO 105-B02)

**Fastness to rubbing**  
Wet 3/4; Dry 4/5  
(EN ISO 105-X12)

**Cleaning**  
Dry-cleaning  
Please see the ISO symbols

**Composition**  
58%VI 31%CO 11%LI

**Largeur**  
Env. 140 cm

**Poids**  
566 g/m<sup>2</sup> 793 g/mtl  
(+/-5%)

**Résistance à l'abrasion**  
>40.000 Martindale tours  
(EN ISO 12947-2)

**Boulochage**  
3/4 (EN ISO 12945-2)

**Flammabilité**  
California TB117:2013  
NFPA 260:2019

**Solidité à la lumière**  
4 (EN ISO 105-B02)

**Solidité au frottement**  
Mouillé 3/4; Sec 4/5  
(EN ISO 105-X12)

**Nettoyage**  
Lavage à sec  
Se référer aux symboles  
ISO

**Zusammensetzung**  
58%VI 31%CO 11%LI

**Breite**  
Ca. 140 cm

**Gewicht**  
566 g/m<sup>2</sup> 793 g/mtl  
(+/-5%)

**Scheuerfestigkeit**  
>40.000 Martindale  
Scheuertouren  
(EN ISO 12947-2)

**Pilling**  
3/4 (EN ISO 12945-2)

**Feuersicherung**  
California TB117:2013  
NFPA 260:2019

**Lichtechtheit**  
4 (EN ISO 105-B02)

**Reibechtheit**  
Nass 3/4; Trocken 4/5  
(EN ISO 105-X12)

**Reinigung**  
Trockenreinigung  
Gemäß ISO Symbolen

**Geman Textile G.&G. Srl**

sede legale: corso XXV aprile 167/B

22036 Erba - CO

magazzino: fraz. Ceresa 1

23895 Nibionno LC

onemariosirtori.com