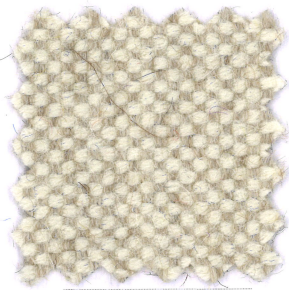


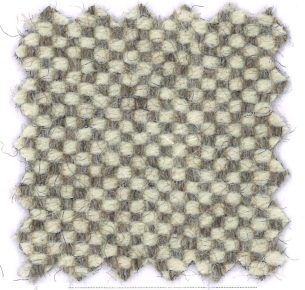
EVEREST

ONE

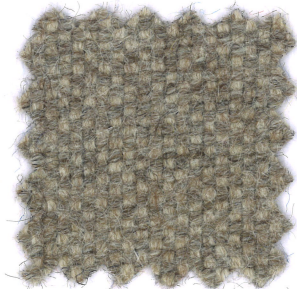
mariosirtoni



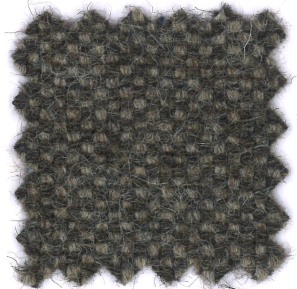
601



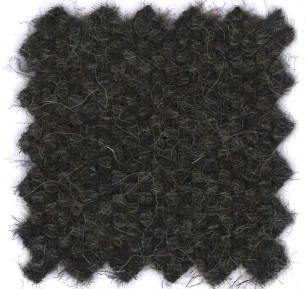
602



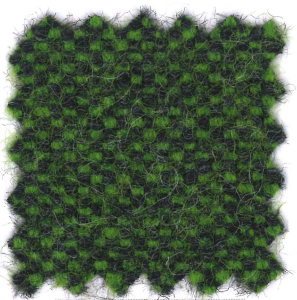
601/1



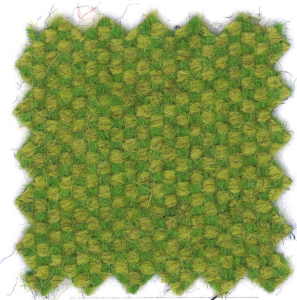
602/1



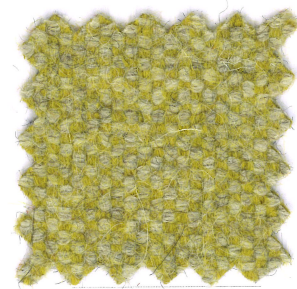
607



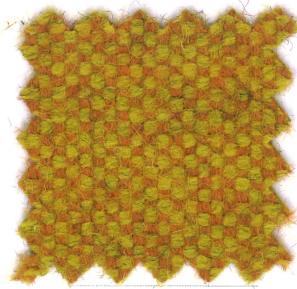
817



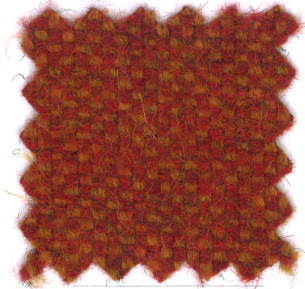
817/1



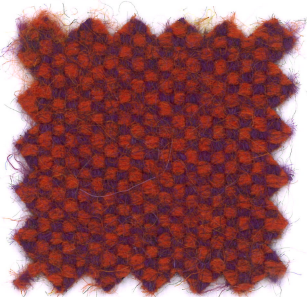
805



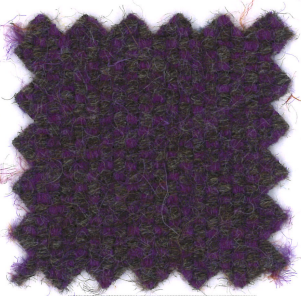
820



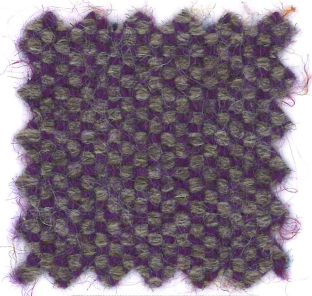
820/1



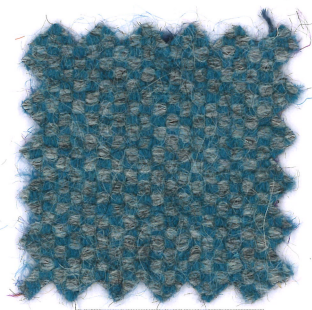
808



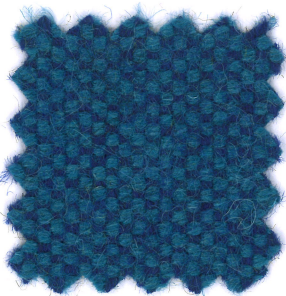
808/1



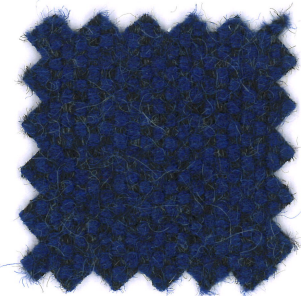
808/2



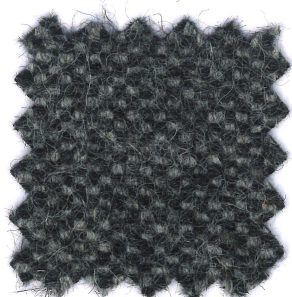
806



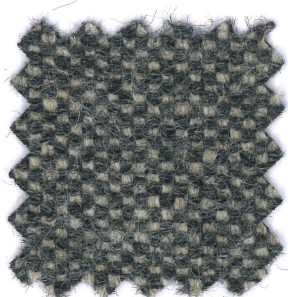
812



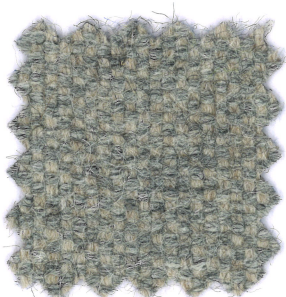
605



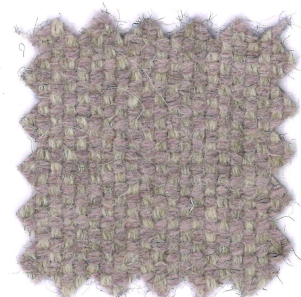
608



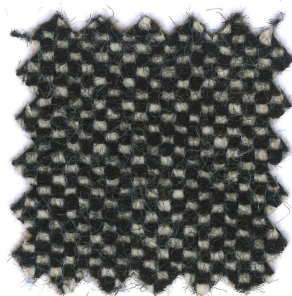
601/2



601/3



601/4



699

EVEREST



Composizione

75%WO 15%WP 10%PA

Altezza

Ca. 140 cm

Peso

525 g/m² 735 g/mtl
(+/-5%)

Resistenza all'abrasione

130.000 cicli Martindale
(EN ISO 12947-2)

Pilling

3/4 (EN ISO 12945-2)

Ignifugazione

UNI 9175 Classe 1-IM
California TB 117:2013
C&M EN 1021.1.2
C&M BS 5852.1.1979
BS 5852 Crib 5
(Resinato)

Solidità alla luce

4/5 (EN ISO 105-B02)

Solidità allo sfregamento

Umido 4; Secco 4/5
(EN ISO 105-X12)

Lavaggio

Lavaggio a secco
Seguire simboli ISO

Note

Tessuto tinto in filo anche per utilizzo tendaggio. L'eventuale presenza di irregolarità nel filato è da considerare caratteristica del prodotto trattandosi di filo effetto naturale. Le differenze cromatiche che si riscontrano fra i vari lotti, sono da intendersi normali e da valutare con le abituali tolleranze dei tessuti tinti in filo. Lavorare separatamente i vari lotti di consegna.

Composition

75%WO 15%WP 10%PA

Width

App. 140 cm

Weight

525 g/m² 735 g/mtl
(+/-5%)

Abrasion resistance

130.000 Martindale cycles
(EN ISO 12947-2)

Pilling

3/4 (EN ISO 12945-2)

Flammability

UNI 9175 Class 1-IM
California TB 117:2013
C&M EN 1021.1.2
C&M BS 5852.1.1979
BS 5852 Crib 5
(Resined)

Light fastness

4/5 (EN ISO 105-B02)

Fastness to rubbing

Wet 4; Dry 4/5
(EN ISO 105X12)

Cleaning

Dry cleaning
Please see the ISO symbols

Note

This fabric is yarn-dyed and is suitable also for curtains. Possible irregularities of the yarn must be considered as a feature of the product because it's a yarn with natural effect. Batch to batch chromatic variations must be considered as normal and are to be evaluated with the usual tolerance of this type of fabric. Work separately different delivery lots.

Composition

75%WO 15%WP 10%PA

Largeur

Env. 140 cm

Poids

525 g/m² 735 g/mtl
(+/-5%)

Résistance à l'abrasion

130.000 Martindale tours
(EN ISO 12947-2)

Boulochage

3/4 (EN ISO 12945-2)

Flammabilité

UNI 9175 Classe 1-IM
California TB 117:2013
C&M EN 1021.1.2
C&M BS 5852.1.1979
BS 5852 Crib 5
(Résiné)

Solidité à la lumière

4/5 (EN ISO 105-B02)

Solidité au frottement

Mouillé 4; Sec 4/5
(EN ISO 105X12)

Nettoyage

Lavage à sec
Se référer aux symboles ISO

Remarque

Tissu teint en fil adapté pour les rideaux. Les éventuelles irrégularités dans le fil sont à considérer comme des caractéristiques des fibres avec un effet naturel. Il peut y avoir des différences chromatiques d'un lot à l'autre dans des proportions d'usage qui sont à considérer selon les normes habituelles de tolérance en matière de teinture en fil. Il est préférable, lors des confections, de ne pas mélanger les divers lots de teinture.

Zusammensetzung

75%WO 15%WP 10%PA

Breite

Ca. 140 cm

Gewicht

525 g/m² 735 g/mtl
(+/-5%)

Scheuerfestigkeit

130.000 Martindale
Scheuertouren
(EN ISO 12947-2)

Pilling

3/4 (EN ISO 12945-2)

Feuersicherung

UNI 9175 Klasse 1-IM
California TB 117:2013
C&M EN 1021.1.2
C&M BS 5852.1.1979
BS 5852 Crib 5
(Verharzt)

Lichtechtheit

4/5 (EN ISO 105-B02)

Reibechtheit

Nass 4; Trocken 4/5
(EN ISO 105X12)

Reinigung

Trockenreinigung
Gemäß ISO Symbolen

Anmerkung

Garngefärbtes Gewebe geeignet für Vorhänge. Mögliche Fadenunregelmäßigkeiten sind als warentypische Eigenschaften zu betrachten, da es ist ein Garn mit natürlicher Wirkung. Farbunterschiede zwischen den einzelnen Chargen sind innerhalb der üblichen Toleranzen garnggefärbter Stoffe als normal anzusehen. Verschiedene Lieferpartien sind separat zu verarbeiten.

Geman Textile G.&G. Srl

sede legale: corso XXV aprile 167/B
22036 Erba - CO
magazzino: fraz. Ceresa 1
23895 Nibionno LC
onemariosirtori.com