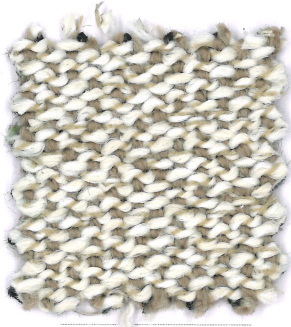
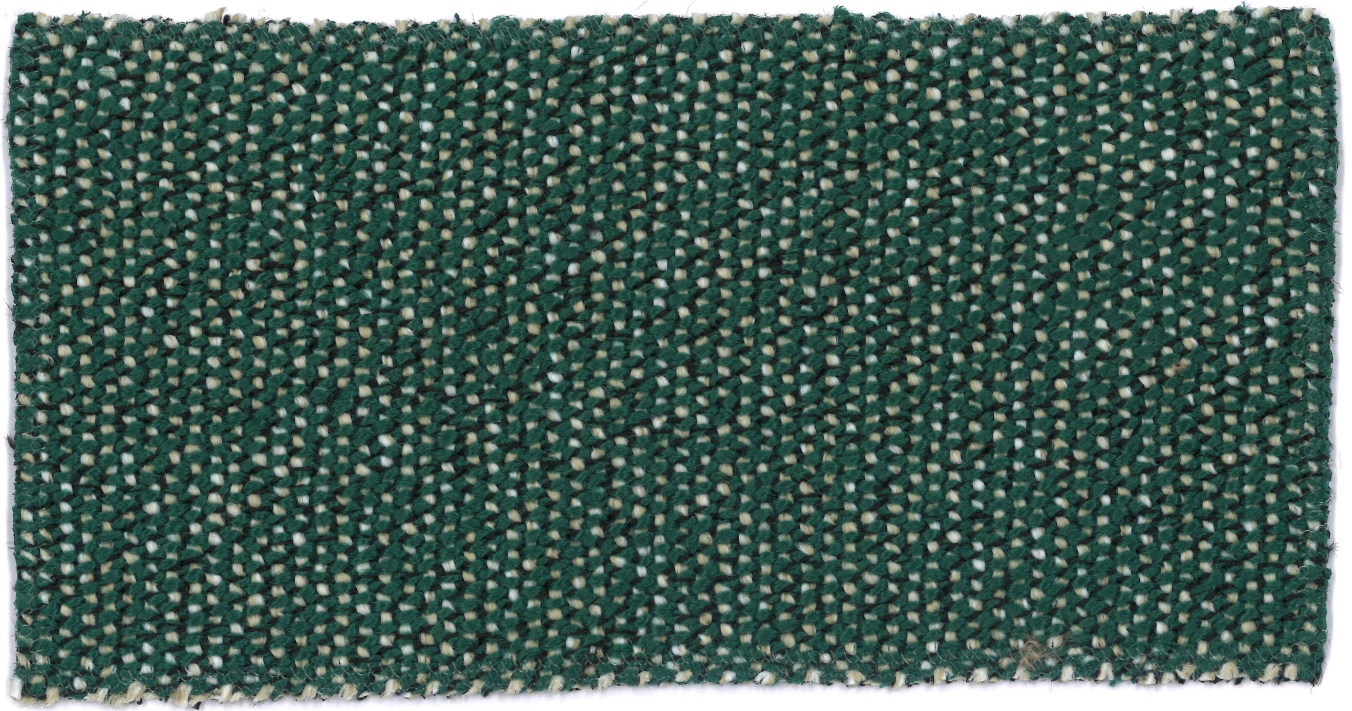


DELTA

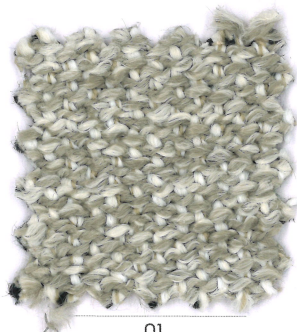
OUT^{PERFORM}

ONE

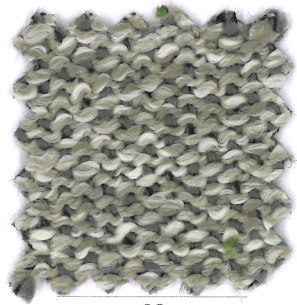
mariosirton



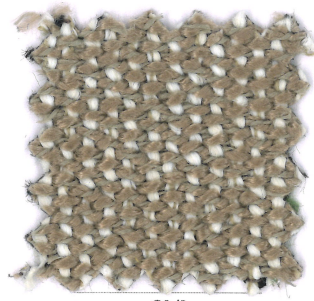
03



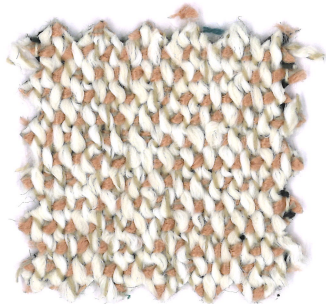
01



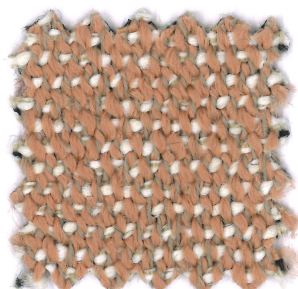
90



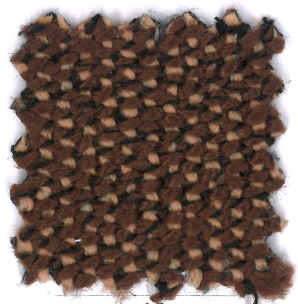
01/1



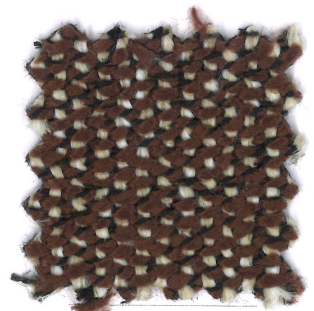
45/1



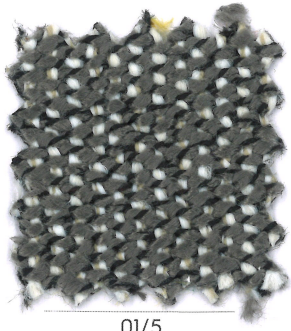
01/3



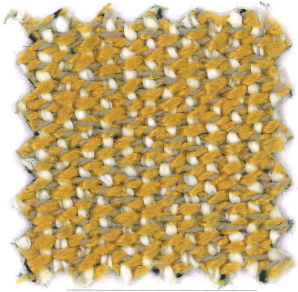
45



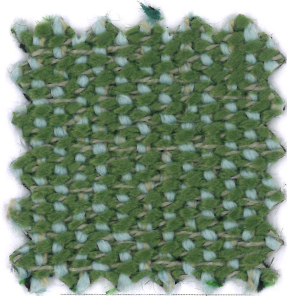
02



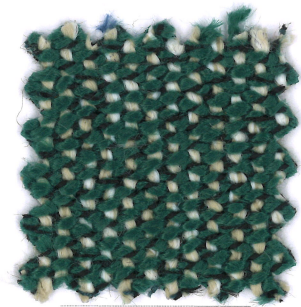
01/5



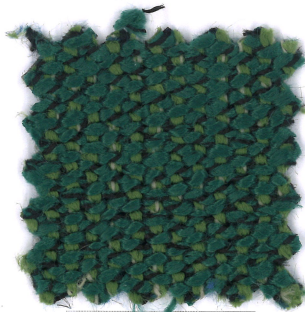
01/4



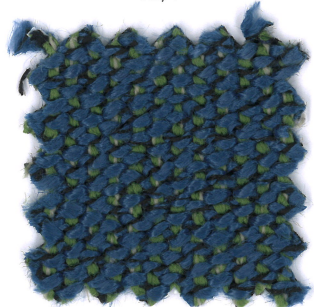
80/1



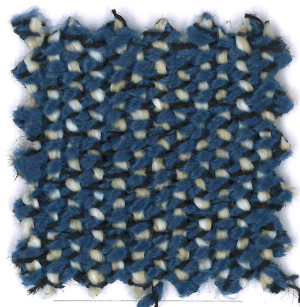
02/1



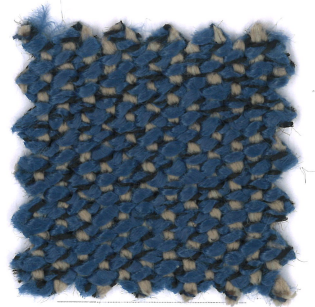
15



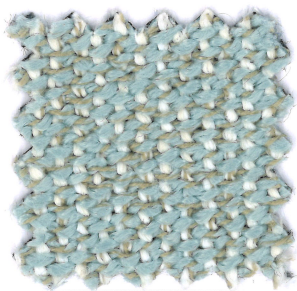
15/1



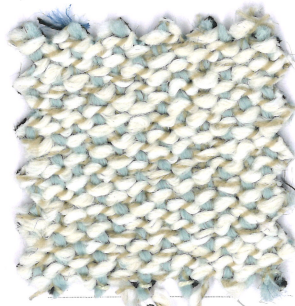
02/3



03/1



01/6



80

DELTA



Composizione

80%PP 20%PL

Altezza

Ca. 140 cm

Peso

590 g/m² 826 g/mtl
(+/-5%)

Resistenza all'abrasione

80.000 cicli Martindale
(EN ISO 12947 -2)

Pilling

4/5 (EN ISO 12945-2)

Ignifugazione

California TB117:2013
Cigarette BS 5852.1.1979

Solidità alla luce

7 (EN ISO 105-B02)

Solidità allo sfregamento

Umido 5; Secco 4/5
(EN ISO 105-X12)

Lavaggio

Lavaggio a umido
Seguire simboli ISO

Designer

CMP Design

Composition

80%PP 20%PL

Width

App. 140 cm

Weight

590 g/m² 826 g/mtl
(+/-5%)

Abrasion resistance

80.000 Martindale cycles
(EN ISO 12947 -2)

Pilling

4/5 (EN ISO 12945-2)

Flammability

California TB117:2013
Cigarette BS 5852.1.1979

Light fastness

7 (EN ISO 105-B02)

Fastness to rubbing

Wet 5; Dry 4/5
(EN ISO 105-X12)

Cleaning

Wet cleaning
Please see the ISO symbols

Designer

CMP Design

Composition

80%PP 20%PL

Largeur

Env. 140 cm

Poids

590 g/m² 826 g/mtl
(+/-5%)

Résistance à l'abrasion

80.000 Martindale tours
(EN ISO 12947 -2)

Boulochage

4/5 (EN ISO 12945-2)

Flammabilité

California TB117:2013
Cigarette BS 5852.1.1979

Solidité à la lumière

7 (EN ISO 105-B02)

Solidité au frottement

Mouillé 5; Sec 4/5
(EN ISO 105-X12)

Nettoyage

Lavage à l'eau
Se référer aux symboles
ISO

Designer

CMP Design

Zusammensetzung

80%PP 20%PL

Breite

Ca. 140 cm

Gewicht

590 g/m² 826 g/mtl
(+/-5%)

Scheuerfestigkeit

80.000 Martindale
Scheuertouren
(EN ISO 12947 -2)

Pilling

4/5 (EN ISO 12945-2)

Feuersicherung

California TB117:2013
Cigarette BS 5852.1.1979

Lichtechtheit

7 (EN ISO 105-B02)

Reibechtheit

Nass 5; Trocken 4/5
(EN ISO 105-X12)

Reinigung

Nassreinigung
Gemäß ISO Symbolen

Designer

CMP Design

Geman Textile G.&G. Srl

sede legale: corso XXV aprile 167/B
22036 Erba - CO
magazzino: fraz. Ceresa 1
23895 Nibionno LC
onemariosirtori.com

- 100% recyclable fabrics
- Outperform series in solution dyed polypropylene
- Martindale and pilling suitable for upholstery
- Anti-allergic
- Resistant to fungus, bacteria, sunlight, humidity, chlorine, food stains and sweat
- Compatible with delicate baby skin.

- Eco-friendly (low energy for cleaning, long lasting life cycle, easy to use)
- Thermoregulating and traspiring.
- Resist years of washing, no odour absorption, washing only at 30° cycle and with small detergent.
- Quick drying, very comfortable and lightweight, easy to clean
- Bleach cleanable by using a very small quantity of bleach mixed up with water; it is very important that the bleach is properly removed with water and that the fabric is carefully dried up before sun light exposure