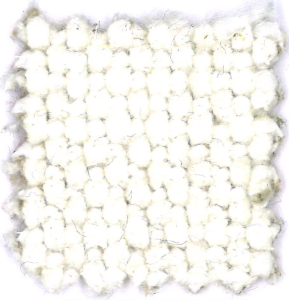
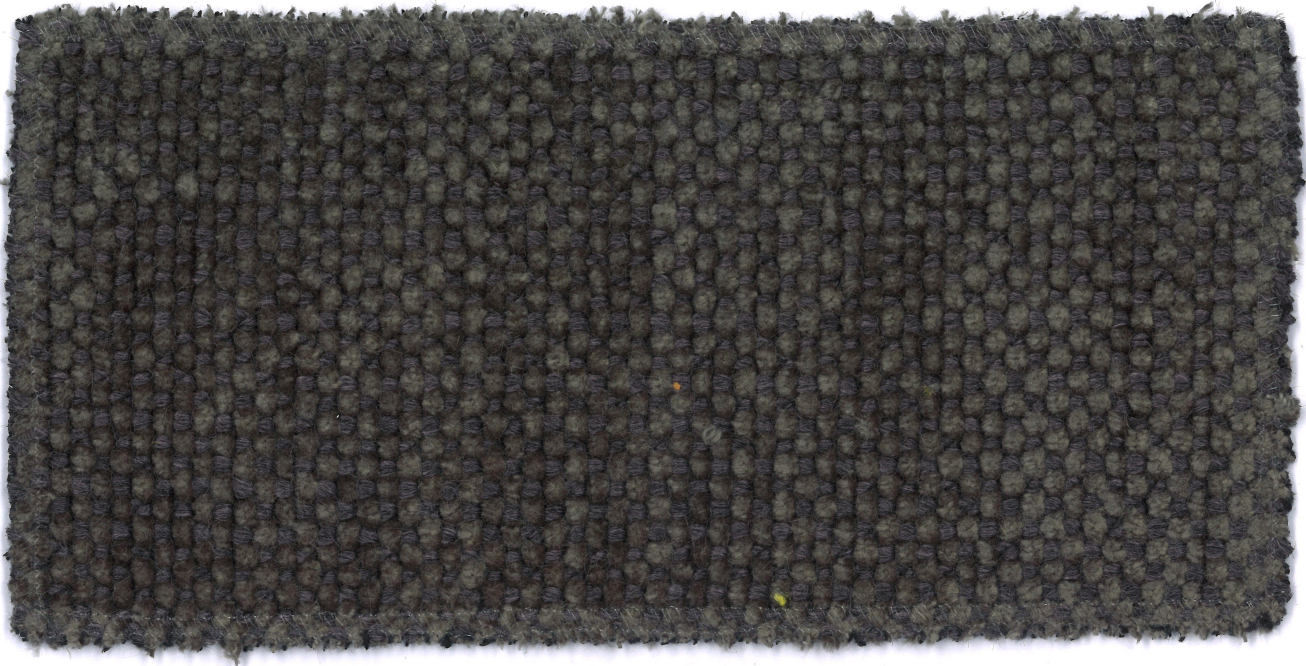


---

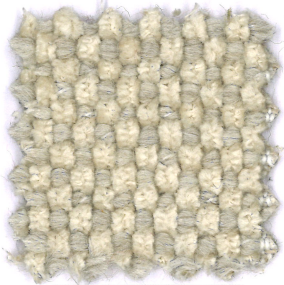
GIADA

ONE

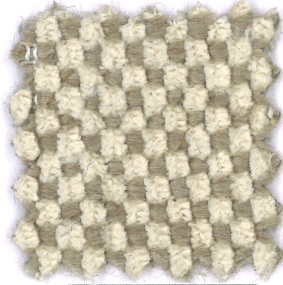
mariosirtoni



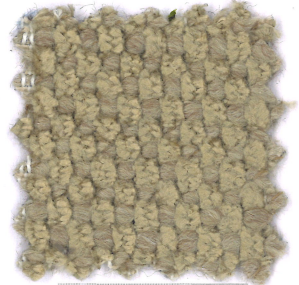
01



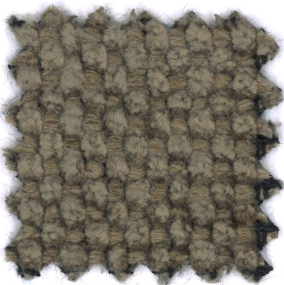
02/1



02/2



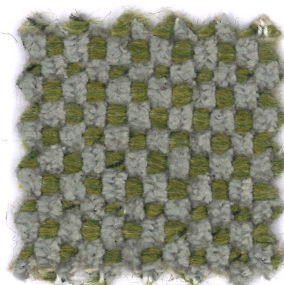
03/1



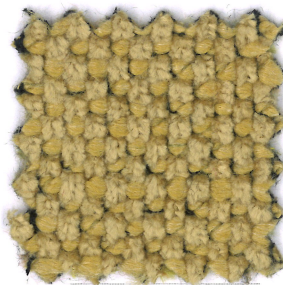
09/1



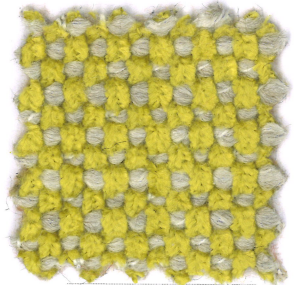
96/2



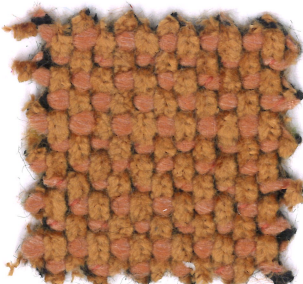
90/3



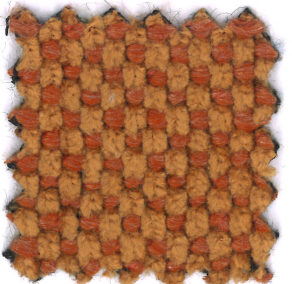
20/3



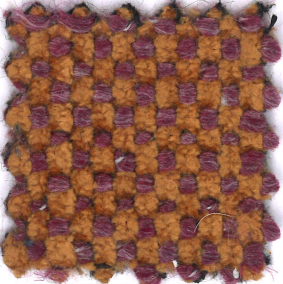
10/1



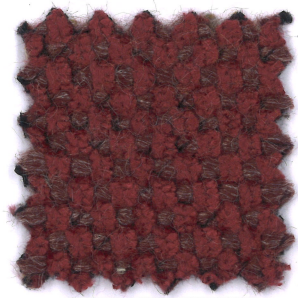
30/2



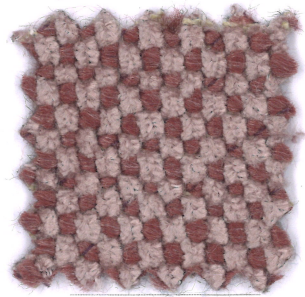
30/12



30/1



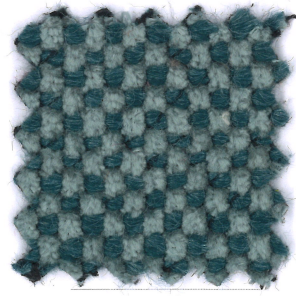
45/4



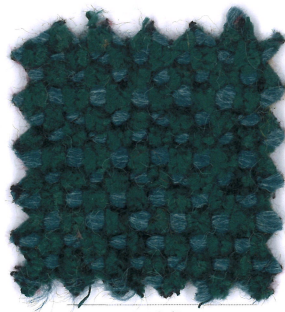
66/1



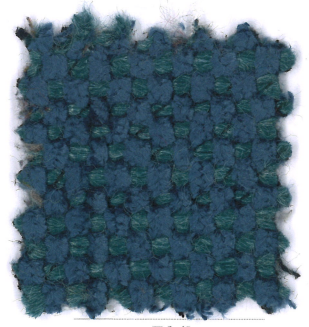
96/1



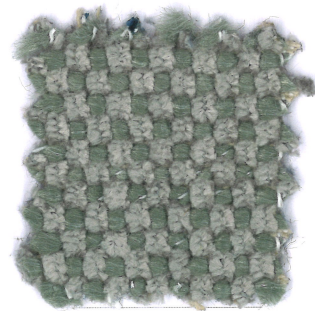
76/2



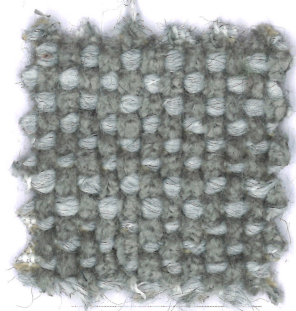
19/1



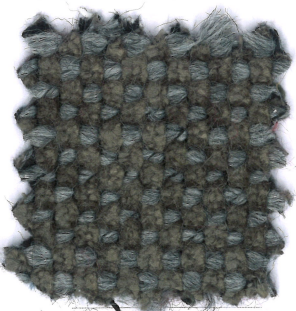
78/1



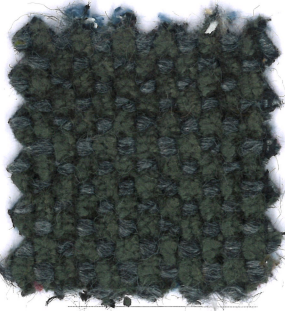
90/2



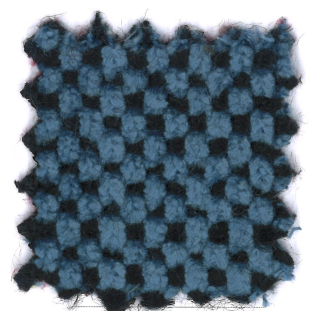
90/1



96/3



98/1



74/1



# GIADA



**Composizione**  
60%PC 19%CO 11%VI  
6%PL 4%AF

**Altezza**  
Ca. 140 cm

**Peso**  
690 g/m<sup>2</sup> 966 g/mtl  
(+/-5%)

**Resistenza all'abrasione**  
90.000 cicli Martindale  
(EN ISO 12947-2)

**Pilling**  
5 (EN ISO 12945-2)

**Ignifugazione**  
California TB117:2013  
C&M BS 5852.1.1979

**Solidità alla luce**  
5 (EN ISO 105-B02)

**Solidità allo sfregamento**  
Umido 4; Secco 5  
(EN ISO 105-X12)

**Lavaggio**  
Lavaggio a secco  
Seguire simboli ISO

**Composition**  
60%PC 19%CO 11%VI  
6%PL 4%AF

**Width**  
App. 140 cm

**Weight**  
690 g/m<sup>2</sup> 966 g/mtl  
(+/-5%)

**Abrasion resistance**  
90.000 Martindale cycles  
(EN ISO 12947-2)

**Pilling**  
5 (EN ISO 12945-2)

**Flammability**  
California TB117:2013  
C&M BS 5852.1.1979

**Light fastness**  
5 (EN ISO 105-B02)

**Fastness to rubbing**  
Wet 4; Dry 5  
(EN ISO 105-X12)

**Cleaning**  
Dry-cleaning  
Please see the ISO symbols

**Composition**  
60%PC 19%CO 11%VI  
6%PL 4%AF

**Largeur**  
Env. 140 cm

**Poids**  
690 g/m<sup>2</sup> 966 g/mtl  
(+/-5%)

**Résistance à l'abrasion**  
90.000 Martindale tours  
(EN ISO 12947-2)

**Boulochage**  
5 (EN ISO 12945-2)

**Flammabilité**  
California TB117:2013  
C&M BS 5852.1.1979

**Solidité à la lumière**  
5 (EN ISO 105-B02)

**Solidité au frottement**  
Mouillé 4; Sec 5  
(EN ISO 105-X12)

**Nettoyage**  
Lavage à sec  
Se référer aux symboles  
ISO

**Zusammensetzung**  
60%PC 19%CO 11%VI  
6%PL 4%AF

**Breite**  
Ca. 140 cm

**Gewicht**  
690 g/m<sup>2</sup> 966 g/mtl  
(+/-5%)

**Scheuerfestigkeit**  
90.000 Martindale  
Scheuertouren  
(EN ISO 12947-2)

**Pilling**  
5 (EN ISO 12945-2)

**Feuersicherung**  
California TB117:2013  
C&M BS 5852.1.1979

**Lichtechtheit**  
5 (EN ISO 105-B02)

**Reibechtheit**  
Nass 4; Trocken 5  
(EN ISO 105-X12)

**Reinigung**  
Trockenreinigung  
Gemäß ISO Symbolen

**Geman Textile G.&G. Srl**

sede legale: corso XXV aprile 167/B

22036 Erba - CO

magazzino: fraz. Ceresa 1

23895 Nibionno LC

onemariosirtori.com