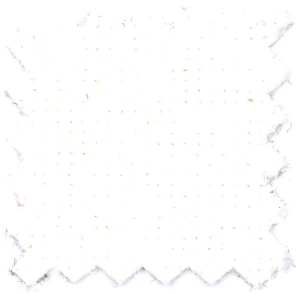


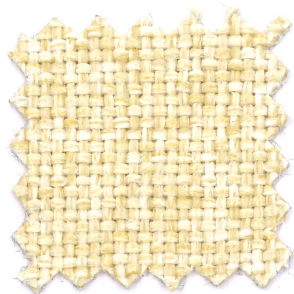
SOLE CS

ONE

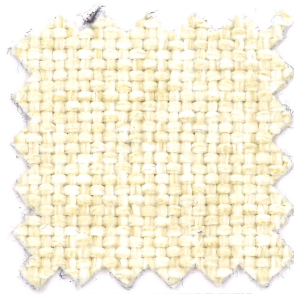
mariosirtoni



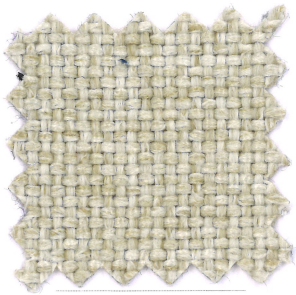
420



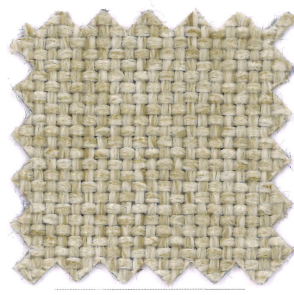
421



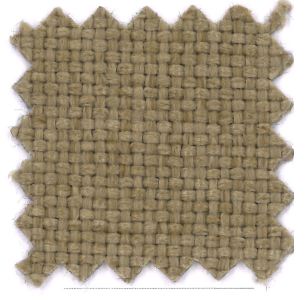
445



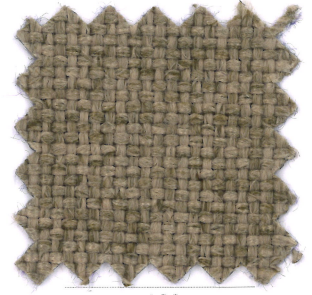
08



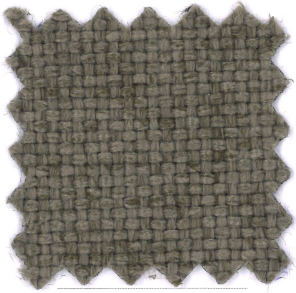
444



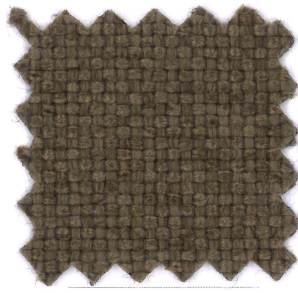
04



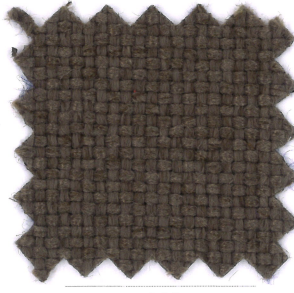
402



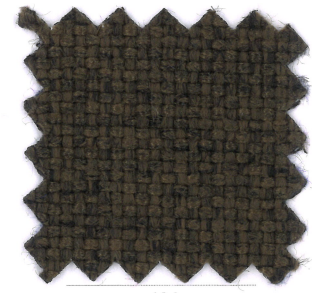
441



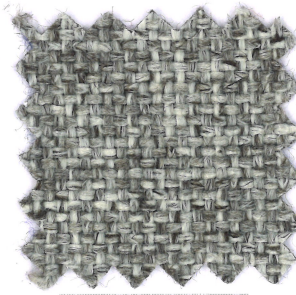
439



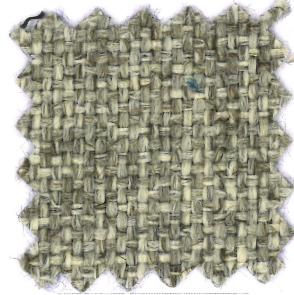
440



416



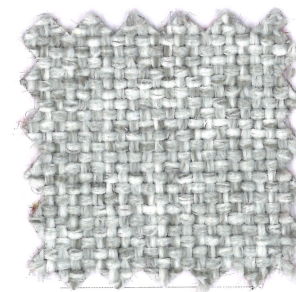
400



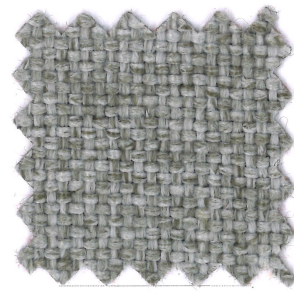
401



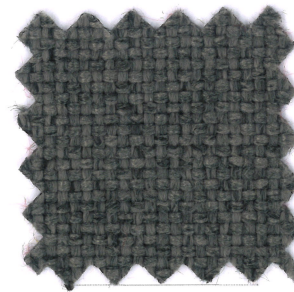
438



443



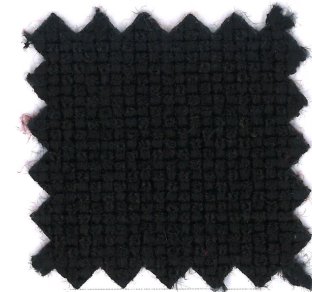
442



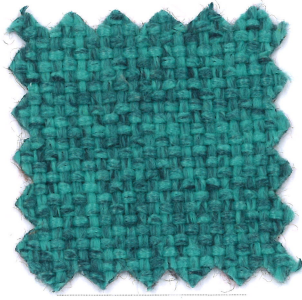
417



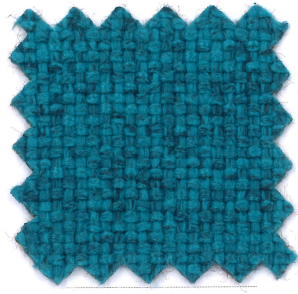
437



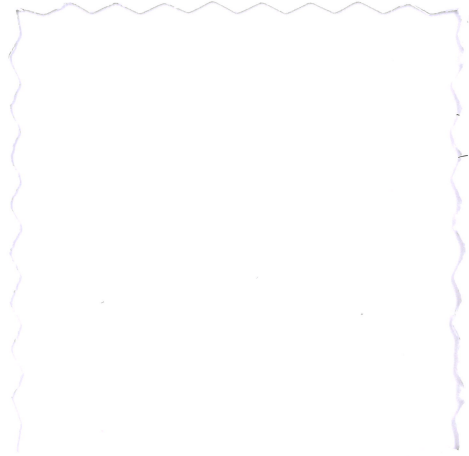
418



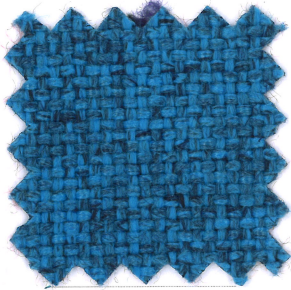
412



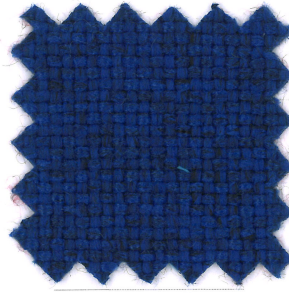
22



422



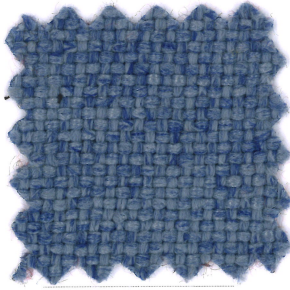
413



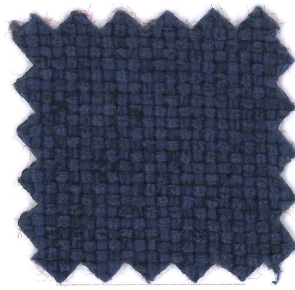
419



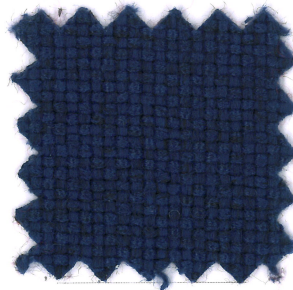
25



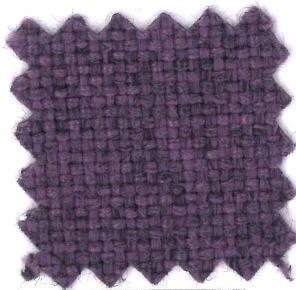
414



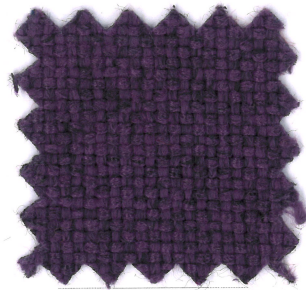
435



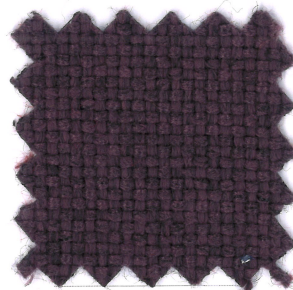
434



20



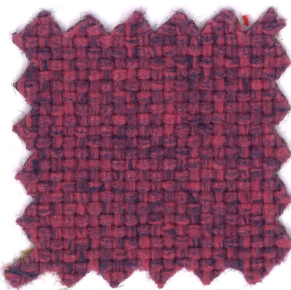
431



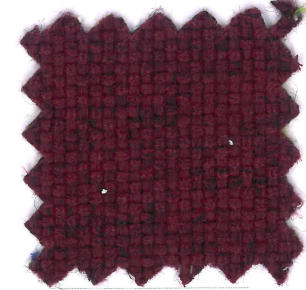
432



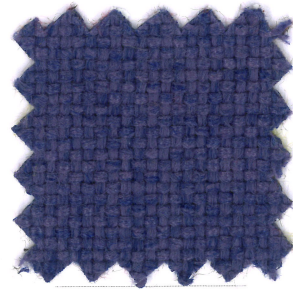
433



19



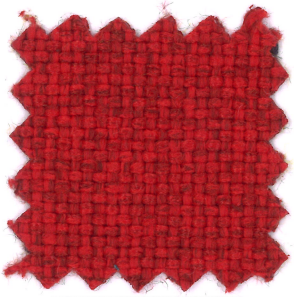
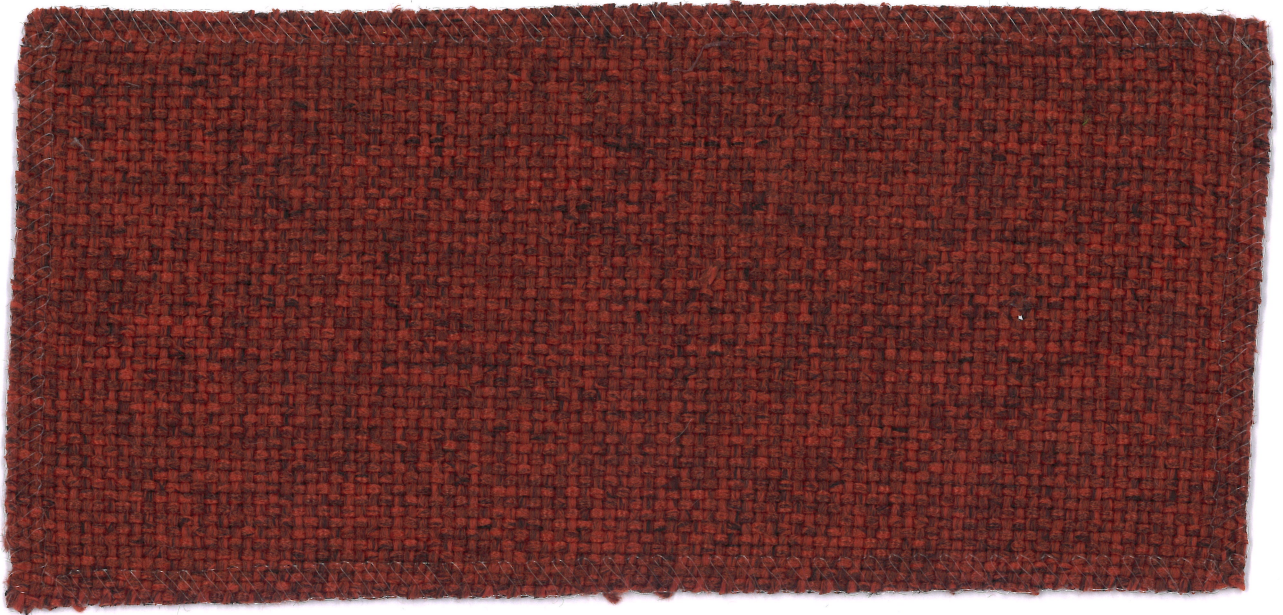
16



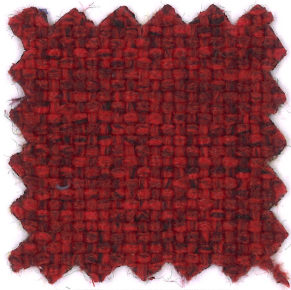
415



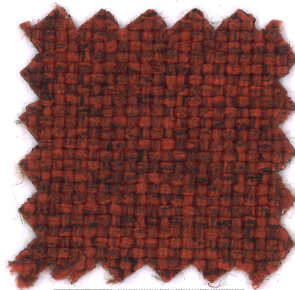
436



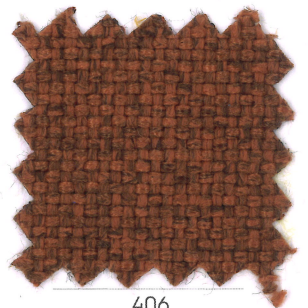
14



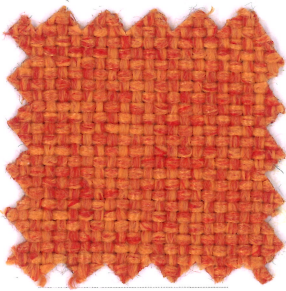
409



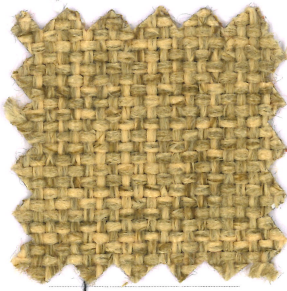
407



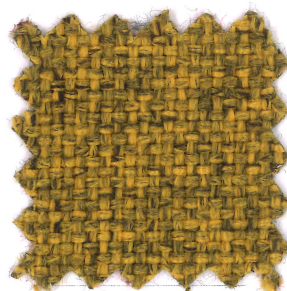
406



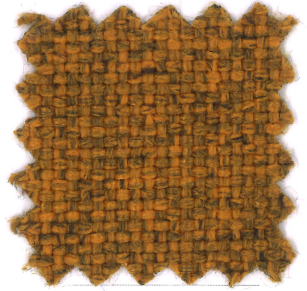
408



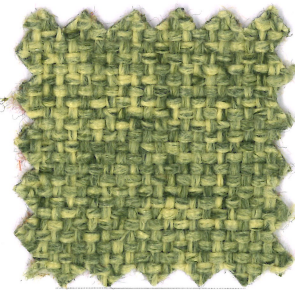
403



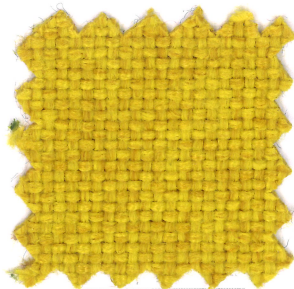
404



405



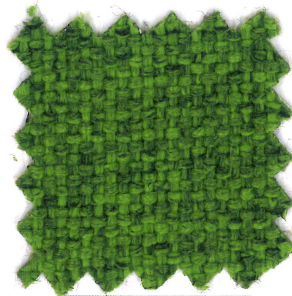
411



07



10



410



11

SOLE CS



Composizione

100% Trevira CS

Altezza

Ca. 140 cm

Peso

525 g/m² 737 g/mtl
(+/-5%)

Resistenza all'abrasione

50.000 cicli Martindale
(EN ISO 12947-2)

Pilling

4/5 (EN ISO 12945-2)

Ignifugazione

UNI 9177 - Classe 1
California TB 117:2013
EN 1021-1&2
BS 5852-Part 0-1 (C&M)
NF P 92-503-507 M1

Solidità alla luce

5 (EN ISO 105-B02)

Solidità allo sfregamento

Umido 4/5; Secco 4/5
(EN ISO 105X12)

Lavaggio

Lavaggio a umido
Requirere simboli ISO
Shrinkage app. 2,5%

Note

Questo prodotto è stato tinto in pezza, seguendo un particolare processo di lavorazione meccanica, per ottenere un aspetto ed una mano non omogenei. Pertanto, eventuali pieghe o non uniformità di tintura e/o aspetto, non sono da considerarsi difetti ma caratteristiche dell'articolo. Le differenze cromatiche che si riscontrano fra i vari lotti, sono da intendersi normali e da valutare con le abituali tolleranze dei tessuti tinti in pezza. Lavorare separatamente i vari lotti di tintura.

Composition

100% Trevira CS

Width

App. 140 cm

Weight

525 g/m² 737 g/mtl
(+/-5%)

Abrasion resistance

50.000 Martindale cycles
(EN ISO 12947-2)

Pilling

4/5 (EN ISO 12945-2)

Flammability

UNI 9177 - Class 1
California TB 117:2013
EN 1021-1&2
BS 5852-Part 0-1 (C&M)
NF P 92-503-507 M1

Light fastness

5 (EN ISO 105-B02)

Fastness to rubbing

Wet 4/5; Dry 4/5
(EN ISO 105X12)

Cleaning

Wet cleaning
Please see the ISO symbols
Shrinkage app. 2,5%

Note

This product has been piece-dyed, following a certain mechanical working process in order to obtain a non homogenous aspect. Therefore, possible folds or non uniformities of dyeing and/or aspect, must not be considered flaws but rather unique features of this article. Batch to batch chromatic variations must be considered as normal and are to be evaluated with the usual tolerance of this type of fabric. Work separately different dye lots.

Composition

100% Trevira CS

Largeur

Env. 140 cm

Poids

525 g/m² 737 g/mtl
(+/-5%)

Résistance à l'abrasion

50.000 Martindale tours
(EN ISO 12947-2)

Boulochage

4/5 (EN ISO 12945-2)

Flammabilité

UNI 9177 - Classe 1
California TB 117:2013
EN 1021-1&2
BS 5852-Part 0-1 (C&M)
NF P 92-503-507 M1

Solidité à la lumière

5 (EN ISO 105-B02)

Solidité au frottement

Mouillé 4/5; Sec 4/5
(EN ISO 105X12)

Nettoyage

Lavage à l'eau
Se référer aux symboles ISO
Rétrécissement 2,5% env.

Remarque

Ce produit a été teint en pièce suivant un processus mécanique particulier pour obtenir une main et un aspect non homogènes. Il faut considerer comme une caractéristique intrinsèque du produit les éventuels plis ainsi que le manque d'uniformité qui pourrait apparaitre dans la teinture et dans l'aspect. Les différences chromatiques entre les divers lots sont à considérer avec le degré de tolérance habituel pour les tissus teints en pièce. Il est préférable, lors des confections, de ne pas mélanger les divers lots de teinture.

Zusammensetzung

100% Trevira CS

Breite

Ca. 140 cm

Gewicht

525 g/m² 737 g/mtl
(+/-5%)

Scheuerfestigkeit

50.000 Martindale
Scheuertouren
(EN ISO 12947-2)

Pilling

4/5 (EN ISO 12945-2)

Feuersicherung

UNI 9177 - Klasse 1
California TB 117:2013
EN 1021-1&2
BS 5852-Part 0-1 (C&M)
NF P 92-503-507 M1

Lichtechtheit

5 (EN ISO 105-B02)

Reibechtheit

Nass 4/5; Trocken 4/5
(EN ISO 105X12)

Reinigung

Nassreinigung
Gemäß ISO Symbolen
Einlaufen ca. 2,5%

Anmerkung

Dieser Artikel ist mittels eines besonderen mechanischen Verarbeitungsverfahrens stückgefärbt, um ein nicht homogenes Aussehen und eine nicht homogene Haptik zu bewirken. Deshalb sind mögliche Falten oder Unregelmäßigkeiten bei Farbe und/oder Aussehen nicht als Fehler zu betrachten, sondern als warentypische Eigenschaften. Farbunterschiede zwischen den einzelnen Chargen sind innerhalb der üblichen Toleranzen stückgefärbter Stoffe als normal anzusehen. Verschiedene Farbpartien sind separat zu verarbeiten.

Geman Textile G.&G. Srl

sede legale: corso XXV aprile 167/B
22036 Erba - CO
magazzino: fraz. Ceresa I
23895 Nibionno LC
onemariosirtori.com



STANDARD
100

18CX00015
CENTROCOT

www.oeko-tex.com



Trevira CS Club
Silver Member
2016

